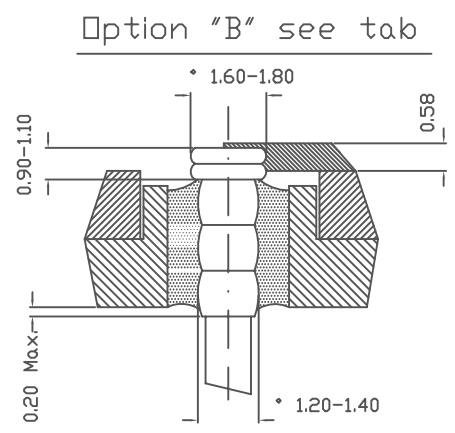
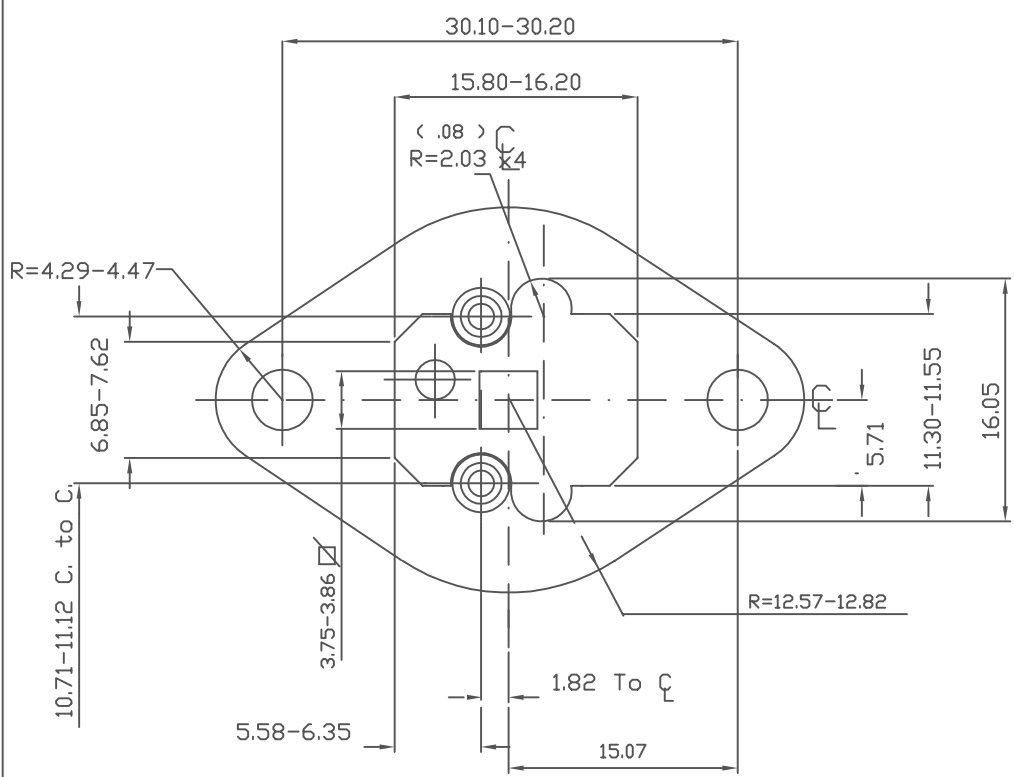


VER.	"X" o "Z" Dim.	"Y" Dim.	"F" Dim.	Lead opt.	FINISCHING
A	Z 3.20-3.60	10.92-11.93	3.88-4.03	A	Electrolitic Ni preplate all
B	Z 3.20-3.60	11.70-12.30	4.00-4.20	A	Electrolitic Ni preplate all
C	Z 3.20-3.60	10.92-11.93	3.88-4.03	B	Electrolitic Ni preplate all
D	Z 3.20-3.60	10.92-11.93	3.88-4.03	B	Electrolitic Ni preplate all glass holes drilled
E	Z 3.20-3.60	10.92-11.93	3.88-4.03	B	Electrolitic Ni preplate all plus Electroless Ni



- Molytab - pure moly clad with pure gold
- Base 1010 carbon steel
- Heat sink copper OFHC
- Leads Fe Ni Alloy 52
- Glass for compression
- Brazing - Ag/Cu Alloy

A	18 May 98	CAD red.	
REV	DATA REVISIONE	DESCRIZIONE VARIAZIONE	
		DENOMINAZIONE	CODICE
		TO 3 STEEL SQUARE MOLY SL	4DP165
SCALA	3 : 1	MATERIALE	SEE NOTES
FIRMA DIS.	DATA EMISSIONE	20 Set 90	ULTIMA REV. A
			FIRMA VERIFICATORE
			FIRMA CONVALIDATORE