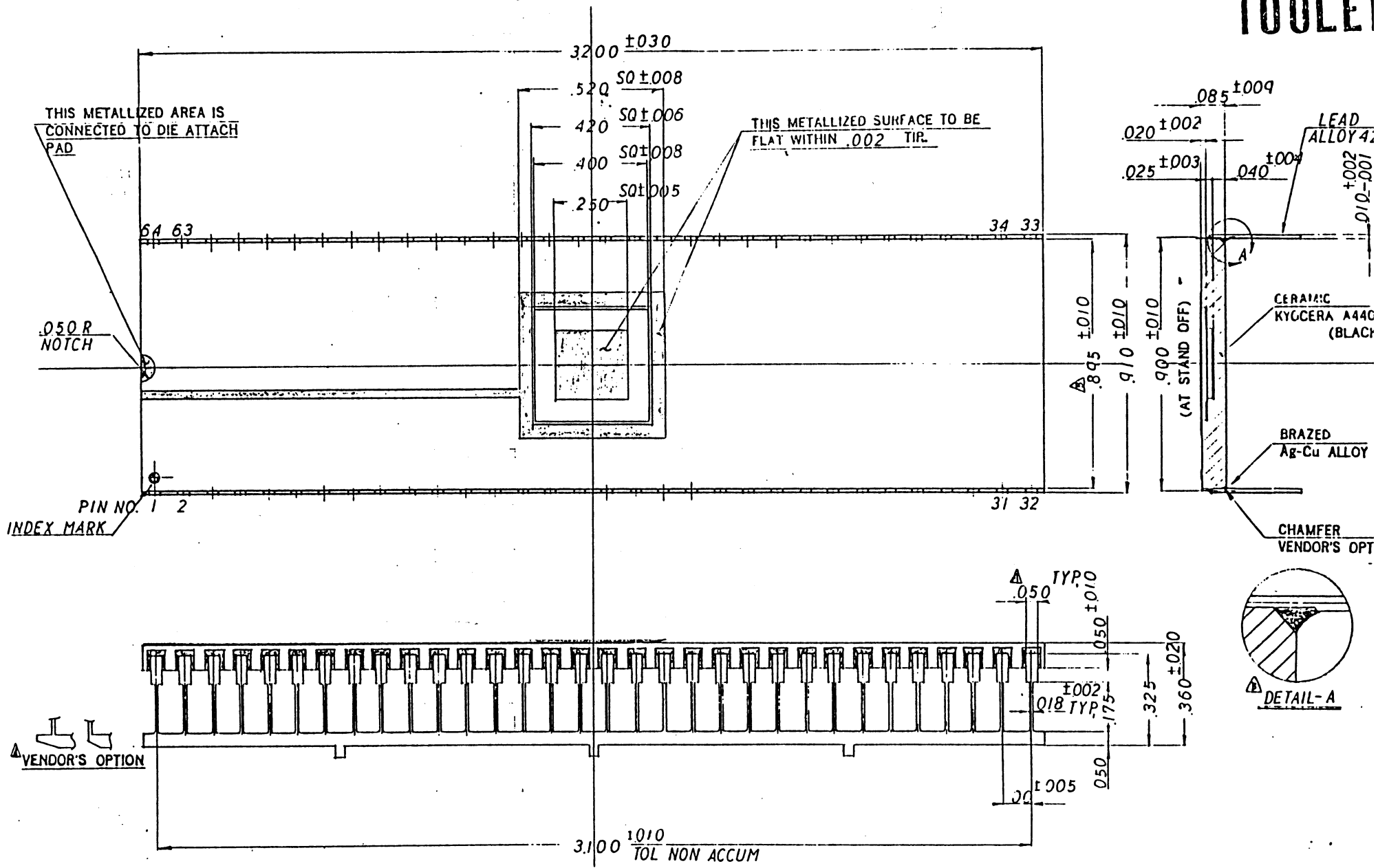
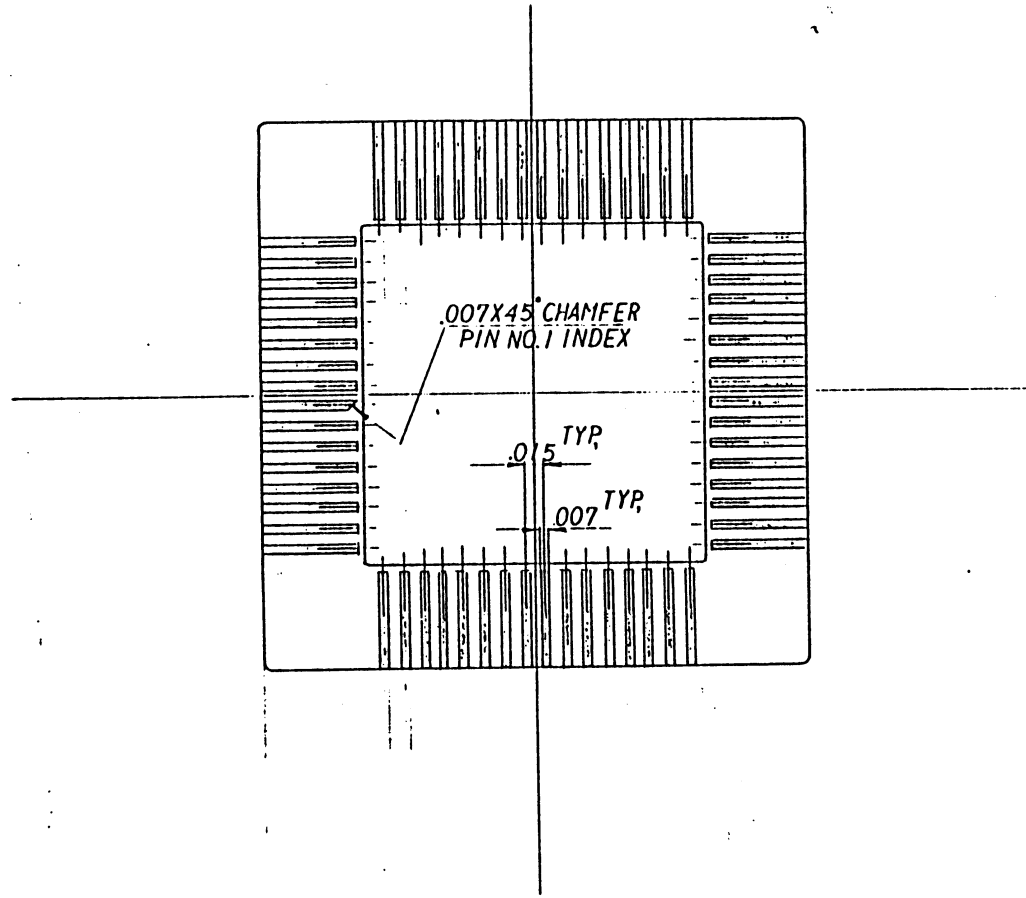


# TOOLE



MODIFICATIONS					NAME	TOLERANCES		DRAWN	CHECKED
					64 LEAD SIDE BRAZE PACKAGE	UNLESS OTHERWISE SPECIFIED		<i>Shibamoto</i>	<i>Shibamoto</i>
	A: CHANGED: LEAD FRAME, .890 → .895, ADDED: DETAIL-A				SCALE	AS INDICATED		APPROVED	DATE
	A: CHANGED: .040 → .050, ADDED: VENDOR'S OPTION,				3:1				APR.28
CHANGE				DATE	DRAWN	CHECKED	APPROVED	KYOTO CERAMIC CO., LTD.	
								KYOTO JAPAN	DWG NO
									KD-80178-B

BPS-64SX-S



NOTES

1. GOLD PLATING 60μ INCHES MIN THICKNESS OVER 100μ INCHES NOMINAL THICKNESS OF NICKEL. UNLESS OTHERWISE SPECIFIED IN PURCHASE ORDER.
2. LEAD RESISTANCE: 1.2 Ω MAX.
3. SEAL AREA TO BE METALLIZED
4. DIE ATTACH AREA TO BE METALLIZED
5. SEAL RING AND DIE ATTACH PAD TO BE FLOATING FROM ANY PINS.

BONDING PATTERN

MODIFICATIONS						NAME <b>64 LEAD SIDE BRAZE PACKAGE</b>	TOLERANCES: UNLESS OTHERWISE SPECIFIED	DRAWN <i>Z. Kojima</i>	CI <i>26</i>
						SCALE <b>10:1</b>	MATERIAL	APPROVED	APR
	Δ: ADDED: NOTES 3,4,5, CHANGE						KYOTO CERAMIC CO., LTD. KYOTO JAPAN		DWG. NO. KD-80178
	DATE <i>SEP 10 '82</i>	DRAWN <i>Z. Kojima</i>	CHECKED <i>Z. Kojima</i>	APPROVED					