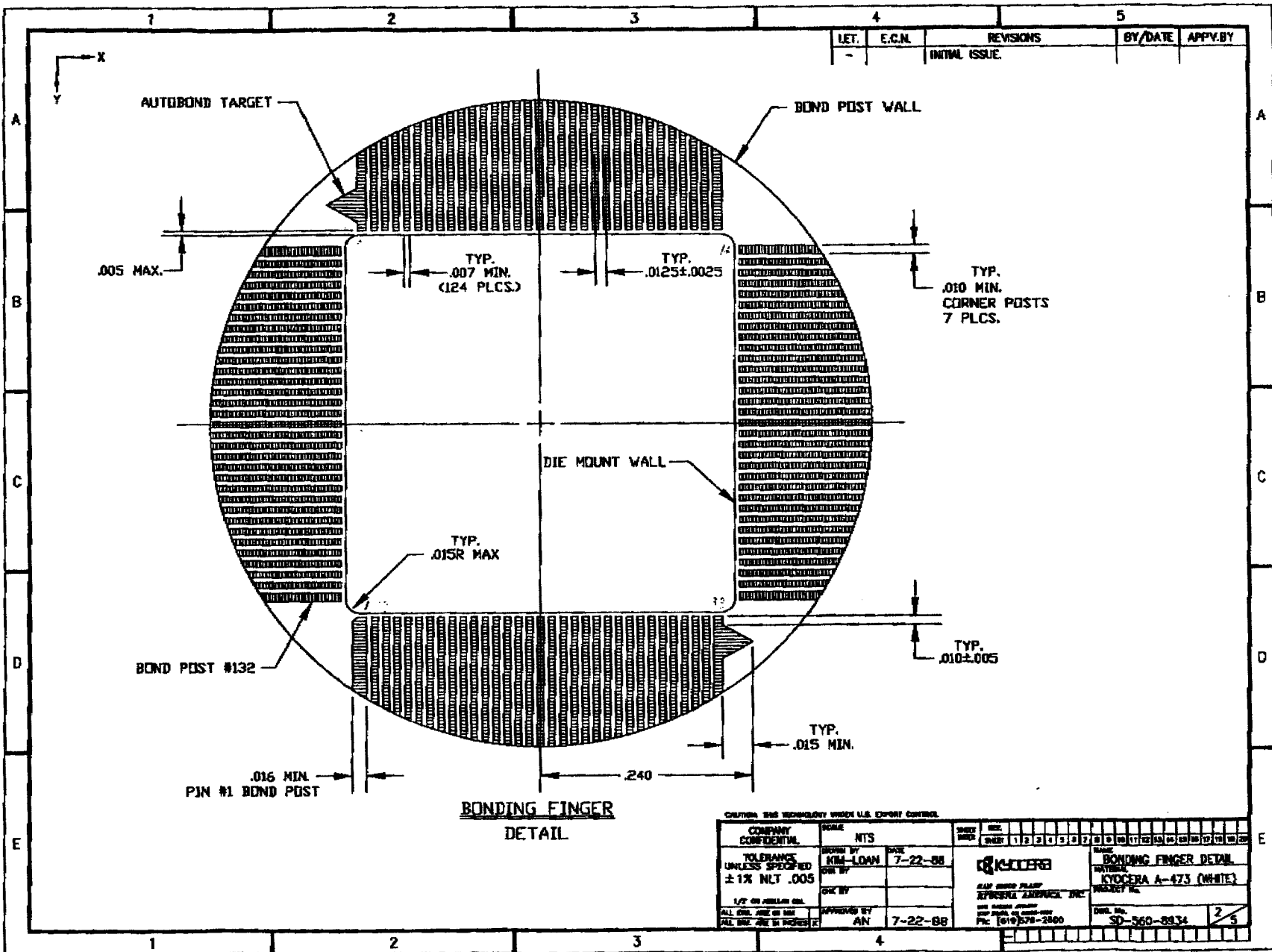


LET.	E.C.N.	REVISIONS	BY/DATE	APPV. BY
A		.440 ± .008 SQ. ADDED NOTE 3 DELETED.	AL/7-22-88	AN 7-22-88
B		ERROR CORRECTION 004 WAS .002.	AL/8-25-88	AN 8-25-88
C		GOLD THK CHANGED FROM 60u MIN. TO 120u MIN.	AL/10-3-88	AN 10-3-88

- NOTES: UNLESS OTHERWISE SPECIFIED**
- METALLIZATION/PLATING: REFRACTORY METAL AND NICKEL PLATING (50-350u") UNDER 120u" MIN OF GOLD PLATING.
 - MATERIAL OF L/F TO BE ALLOY 42 (PER MIL-M-38510 TYPE B).

CONTAINS IBM TECHNOLOGY UNDER U.S. EXPORT CONTROL.

COMPANY CONFIDENTIAL	SCALE 3.5X	SHEET INDEX	REV. INDEX
WARRANTY UNLESS SPECIFIED	DATE KIM LOANIS-30-88	1 2 3 4 5 6 7 8 9 10 11 12	13 14 15 16 17 18 19 20 21 22 23 24 25 26 27 28 29 30
±1% NLT .005	CHK BY	KYOCERA	
APPROVED BY	APPROVAL BY	132 L/C	
ALL DIM. ARE IN INCHES	AN 6-30-88	KYOCERA A-473 (WHITE)	
		SD-560-8934 5	



**BONDING FINGER
DETAIL**

CAUTION: THIS TECHNOLOGY UNDER U.S. EXPORT CONTROL.

COMPANY CONFIDENTIAL	FORM	DATE	REV																			
	NTS	7-22-88	1	2	3	4	5	6	7	8	9	10	11	12	13	14	15	16	17	18	19	20
TOLERANCE UNLESS SPECIFIED ± 1% NLT .005	DESIGN BY KIM-LOAN	DATE 7-22-88																				
1/2" ON MILLAR OIL	CHK BY		BONDING FINGER DETAIL MATERIAL KYOCERA A-473 (WHITE) FINISH UNFINISHED																			
ALL DIM. ARE IN MM ALL DIM. ARE IN DECIMALS	APPROVED BY AN	DATE 7-22-88	KYOCERA AMERICA, INC. 3450 WILSON BLVD. FORT WORTH, TEXAS 76107 TEL: (817) 374-2400																	DES. NO. SD-560-8834	25	