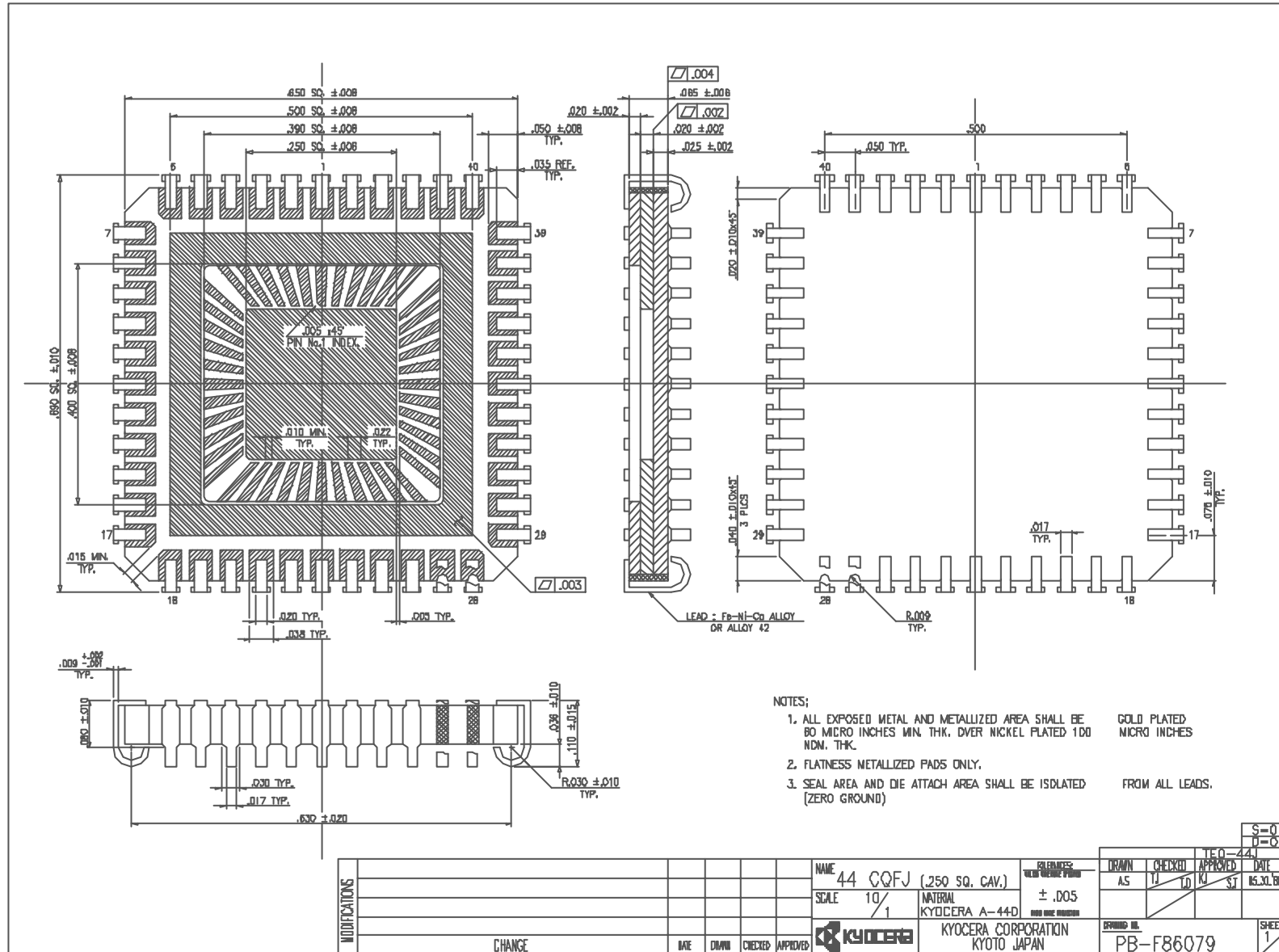


# SSM P/N CCJ04422



- NOTES:
1. ALL EXPOSED METAL AND METALLIZED AREA SHALL BE GOLD PLATED MICRO INCHES 80 MICRO INCHES MIN. THK. OVER NICKEL FLATED 100 NDW. THK.
  2. FLATNESS METALLIZED PADS ONLY.
  3. SEAL AREA AND DIE ATTACH AREA SHALL BE ISOLATED FROM ALL LEADS. (ZERO GROUND)

|               |        |      |       |         |          |                                 |                        |            |           |          |           |        |          |
|---------------|--------|------|-------|---------|----------|---------------------------------|------------------------|------------|-----------|----------|-----------|--------|----------|
| MODIFICATIONS | CHANGE | DATE | DRAWN | CHECKED | APPROVED | NAME                            | EXAMPLES               | DRAWN      | CHECKED   | APPROVED | DATE      | S=0    | D=0      |
|               |        |      |       |         |          | 44 QFP (.250 SQ. CAV.)          | ±.005                  | A.S.       | TJ        | KJ       | ST        | TEO-44 | 05.31.85 |
|               |        |      |       |         |          | SCALE 10/1                      | MATERIAL KYOCERA A-44D |            |           |          |           |        |          |
|               |        |      |       |         |          | KYOCERA CORPORATION KYOTO JAPAN |                        |            |           |          |           |        |          |
|               |        |      |       |         |          |                                 |                        | SPRING NO. | PB-F86079 |          | SHEET 1/1 |        |          |

