

CONFIG K
.340 X .194



CONFIG N
.330 X .180



CONFIG C
.260 X .160



CONFIG A
.260 X .140



CONFIG B
.260 X .160



CONFIG D
.260 X .170



CONFIG E
.360 X .170



CONFIG F
.210 X .150



CONFIG G
.210 X .150



CONFIG I
.340 X .180



CONFIG J
.340 X .180



CONFIG M
.330 X .150



CONFIG H
.260 X .150



CONFIG L
.330 X .170



CONFIG O
.425 X .185



CONFIG P
.390 X .180

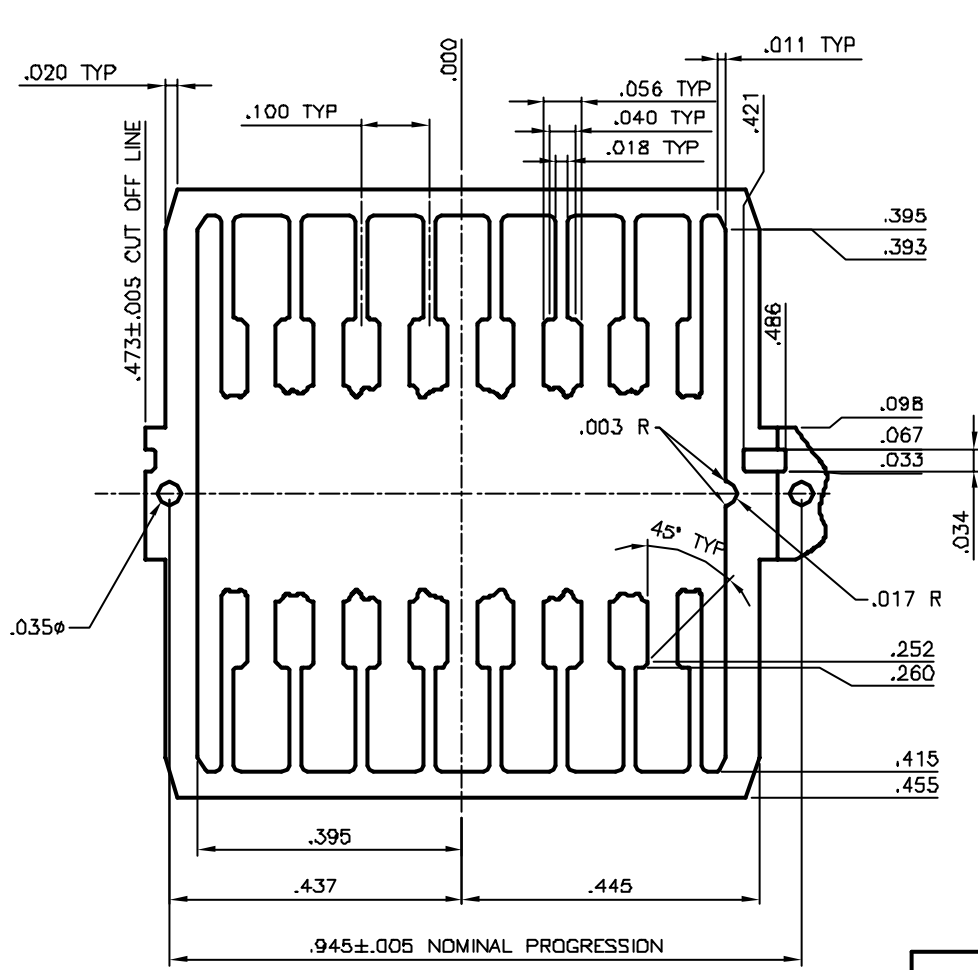


CONFIG Q
.360 X .180

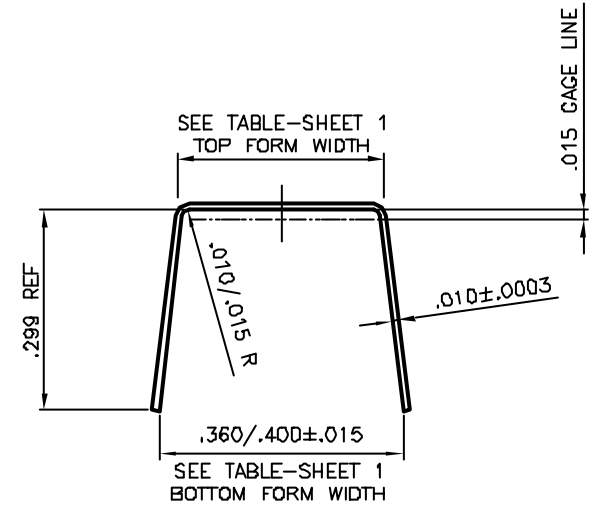


CONFIG R
.260 X .170

CDF01623 = CONFIG. R (.260" X .170")




EXTERNAL FRAME CONFIGURATION "A"
5X SCALE

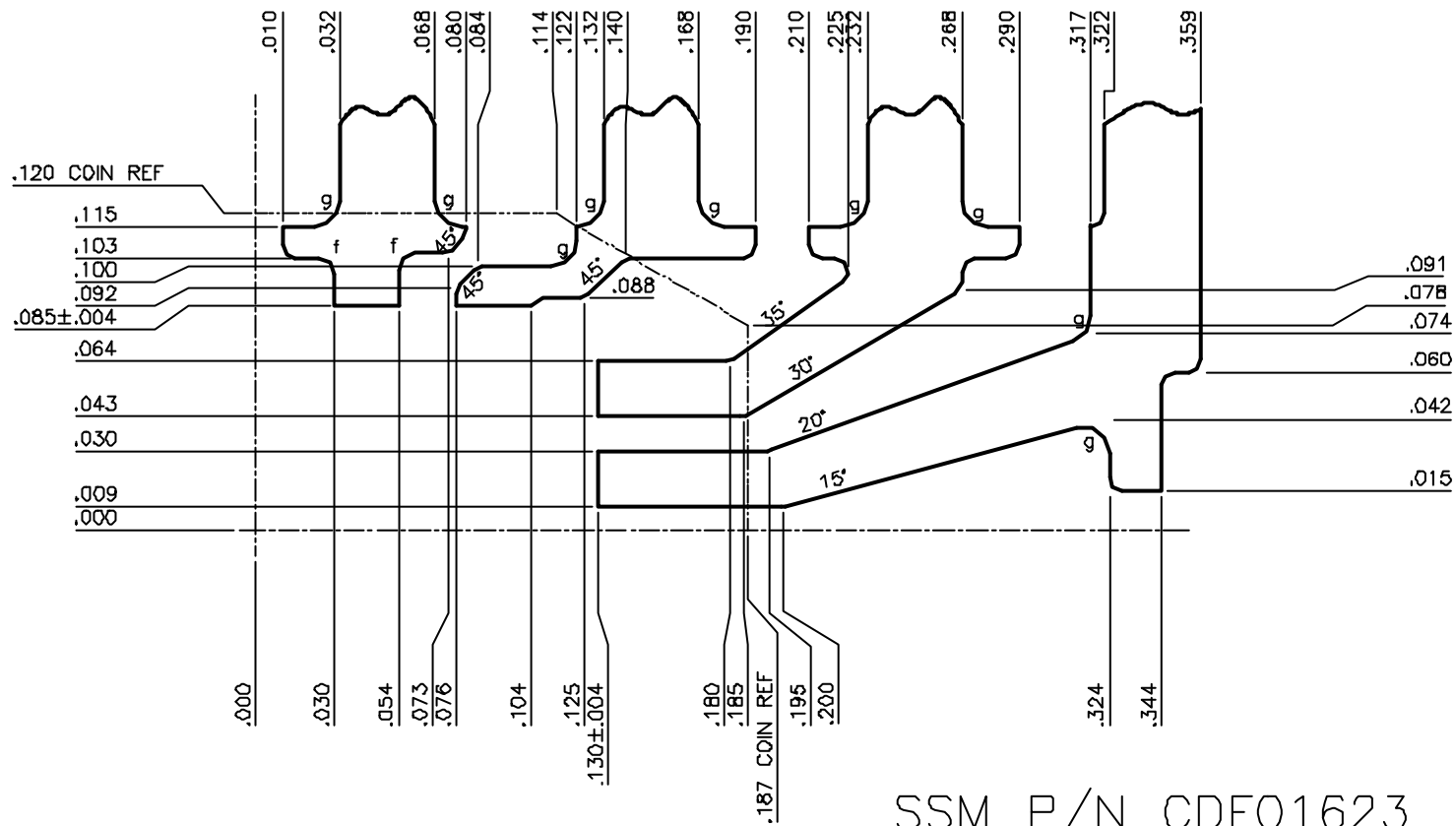


FORMING DIMENSIONS
5X SCALE

NOTES:
1) UNSPECIFIED RADII - .004 R

SSM P/N CDF01623



TOLERANCES		AUTOCAD FILE NAME: F:\DESIGN\FADR\03030 EXTERNAL		 Dyna-Craft Industries, Inc. (A Member of the Hong Leong Group Malaysia) 4060 NORBATROL CT, MURRYSVILLE, PA 15668	
.xx	N/A	LOTUS NOTES FILE NAME:			
.xxx	±.002	DRN BY: AMP	DATE: 9-26-00	TITLE: 16 LEAD CERDIP	
.xxxx	±.002	CK'D BY: TJC	DATE: 9-26-00	SIZE B	DWG NO. FADR - 03030
∠	± 1°	CAVITY SIZE:		CAVITY CONFIGURATIONS:	SCALE: NOTED
				SHEET: 2 OF 21	REV D



SSM P/N CDF01623

NOTES:

- 1) .010 R MK'D "g"
.006 R MK'D "f"
UNSPECIFIED RADII = .005 MAX
- 2) ANGLES MEASURED FROM THE HORIZONTAL


TOLERANCES		AUTOCAD FILE NAME: F:\DESIGN\FADR\03030 CDF16 R		 Dyna-Craft Industries, Inc. (A Member of the Hong Leong Group Malaysia) 4060 NORBATROL CT, MURRYSVILLE, PA 15668	
.xx	N/A	LOTUS NOTES FILE NAME:			
.xxx	±.002	DRN BY: AMP	DATE: 9-26-00	TITLE: 16 LEAD CERDIP	
.xxxx	±.002	CK'D BY: TJC	DATE: 9-26-00	SIZE B	DWG NO. FADR - 03030
 ± 1"		CAVITY SIZE: 260 x 170		CAVITY CONFIGURATIONS: R	SCALE: 20x
				SHEET: 20	OF 21

NOTES: UNLESS OTHERWISE SPECIFIED

1	UNSPECIFIED CRITERIA FOR RAW FRAMES. INSPECT PER SOP10-01			
2	ALL SPECIFIED CRITERIA APPLICABLE TO FINISH PRODUCT			
3	ALL DIMENSIONS ARE IN INCHES UNLESS OTHERWISE SPECIFIED			
4	DIMENSIONS ARE SYMMETRICAL ABOUT CENTERLINE EXCEPT AS SHOWN			
5	SHARP CORNER REQUIRED FOR ALL LEAD TIPS			
6	DIMENSIONS SHOWN PRIOR TO FORMING			
7	MATERIAL TYPE/THICKNESS ALLOY 42 / .010±.0005 UNCOINED			
8	RADIUS ON ALL CORNERS UNLESS OTHERWISE SPECIFIED		MAX	.005
9	BURR	COIN AREA	VERTICAL	MAX .001
			HORIZONTAL	MAX .002
	OUTSIDE COIN	VERTICAL	MAX .002	
		HORIZONTAL	MAX .003	
10	METAL TO METAL SPACING	MIN	.006	
11	LEAD PLANARITY		+ .004 / - .003	
12	LEAD COPLANARITY	MAX	.004	
13	COIN DEPTH		MAX	.002
	COIN LENGTH		MIN	.020
14	ALUMINUM THICKNESS	200-500 MICRO INCHES		
15	LEAD POSITION AFTER FORMING	±.003		
16	FRAMES SUPPLIED IN SINGULATED UNITS			

OPT.#	CAVITY SIZE	CAVITY CONFIGURATION	LEAD SHOULDER CONFIGURATION	TOP FORM ±.003	BOTTOM FORM ±.015	EXTERNAL CONFIGURATION
1	.260 X .140	A	—	.314	.365	A
2	.260 X .160	B	—	.314	.365	A
4	.260 X .170	D	—	.314	.370	A
5	.360 X .170	E	—	.314	.370	A
6	.210 X .150	F	—	.314	.365	A
7	.210 X .150	G	—	.314	.370	A
9	.340 X .180	I	—	.314	.380	A
10	.340 X .180	J	—	.314	.365	A
12	.340 X .194	K	—	.316	.380	A
14	.330 X .155	M	—	.314	.365	A
16	.330 X .180	N	—	.314	.365	A
19	.260 X .170	R	—	.314	.365	A
20	.260 X .140	A	—	.314	.380	A
21	.260 X .140	A	—	.314	.370	A
22	.260 X .160	B	—	.314	.380	A
23	.260 X .170	R	—	.314	.380	A
24	.260 X .170	R	—	.314	.360	A

SSM P/N CDF01623

TOLERANCES		AUTOCAD FILE NAME: F:\DESIGN\FADR\03030 NOTES		 Dyna-Craft Industries, Inc. (A Member of the Hong Leong Group Malaysia) 4060 NORBATROL CT, MURRYSVILLE, PA 15668	
.xx	N/A	LOTUS NOTES FILE NAME:			
.xxx	±.002	DRN BY: AMP	DATE: 9-26-00	TITLE: 16 LEAD CERDIP	
.xxxx	±.002	CK'D BY: TJC	DATE: 9-26-00	SIZE B	DWG NO. FADR - 03030
↙	± 1*	CAVITY SIZE:		CAVITY CONFIGURATIONS:	SCALE: FULL SHEET: 1 OF 21
					REV D