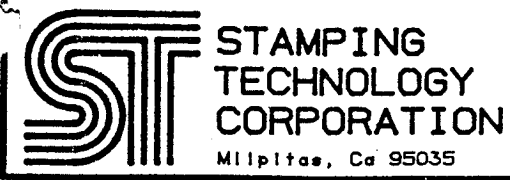


FORMING DIMENSIONS

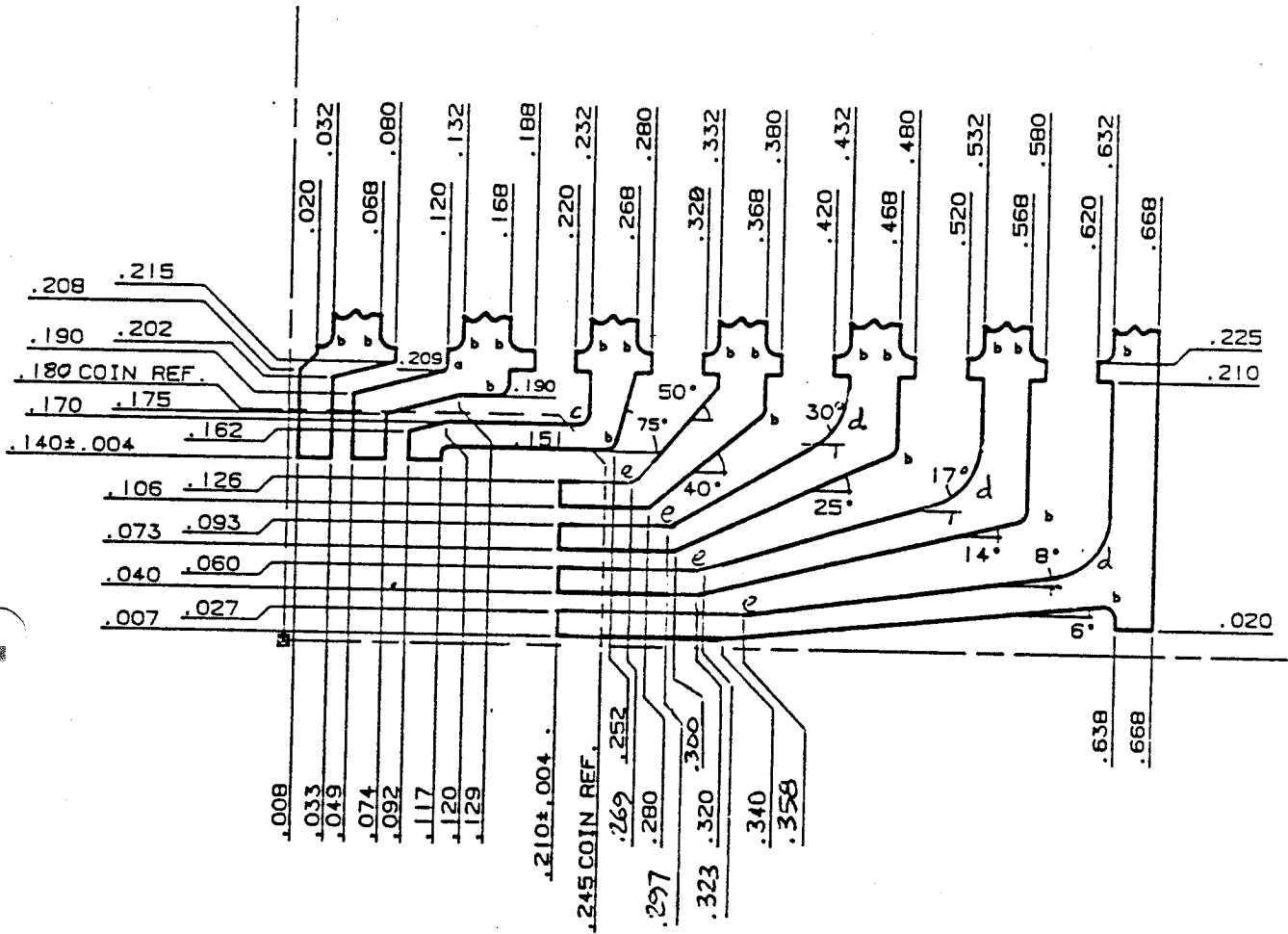
NOMINAL FORM AS SHOWN
 ROUNDED TO 2 PLACES
 EX: .660 FORM ± .015
 .66 SUFFIX 66

SUPPLY MODE

SINGULATED UNITS *** SUFFIX -S**



DRAWN Q	DATE 4-28-86	TITLE 28 LEAD CERDIP-FRAME FORMING / SUPPLY MODE		REV AA
CHECKED Q	4-19-86	SCALE NONE	SIZE A	DWG NBR 03-1225
APPD		SHEET 3		



NOTES:

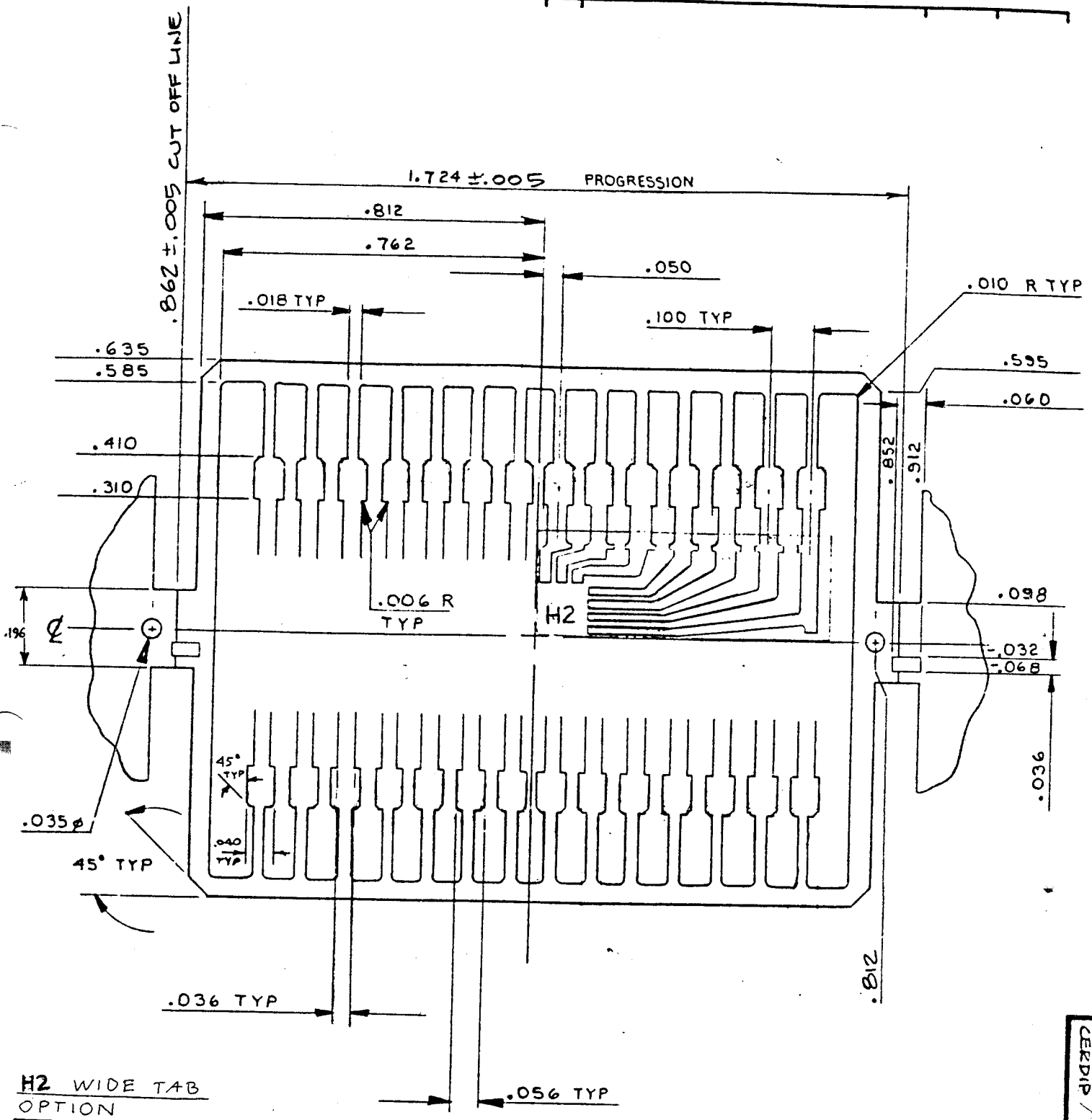
- 1.- UNSPECIFIED RADII .005 MAX.
- 2.- " a " = .006 R.
" b " = .010 R.
3. " c " = .015 R
4. " d " = .050 R
5. " e " = .025 R

28CD12255HI-4228




**STAMPING
TECHNOLOGY
CORPORATION**
Milpitas, Ca 95035

DRAWN VP	DATE 09.29.88	TITLE 28 LEAD CERDIP " HI " FORMAT .420 X .280 CAVITY	MATERIAL ALLOY 42	REV Y
CHECKED VP	DATE 09.29.88	SCALE 7 X	SIZE A	DWG NO 03-1225
APPRO		SHEET H4		



UNSPECIFIED RADII .005 MAX

28 CD 1225SH2-****

 STAMPING TECHNOLOGY CORPORATION Santa Clara, Ca 95050	DRAWN H. G.	DATE 81-7-16	TITLE 28 PIN CERDIP		MATERIAL	REV.
	CHECKED NILES	81-9-11	NOMINAL FRAME PLAN		QTY:	X
	APPROVED RUC	81-9-11	SCALE 3 X	SIZE A	DWG NBR	03-1225
			SHEET 2-A			

BISHOP GRAPHICS/ACCUPRESS
REORDER NO. A13841

CERDIP / 4 A 03-1225