


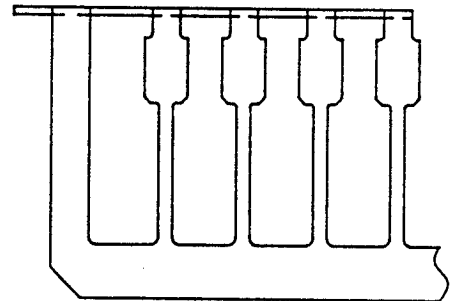
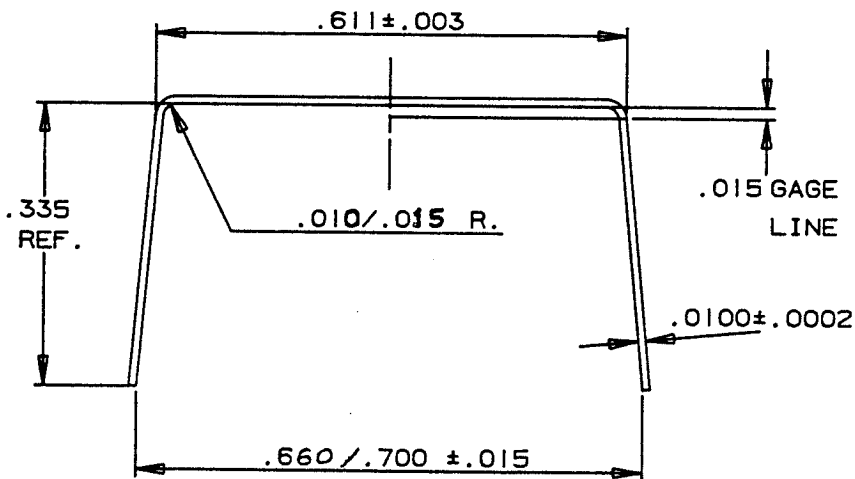
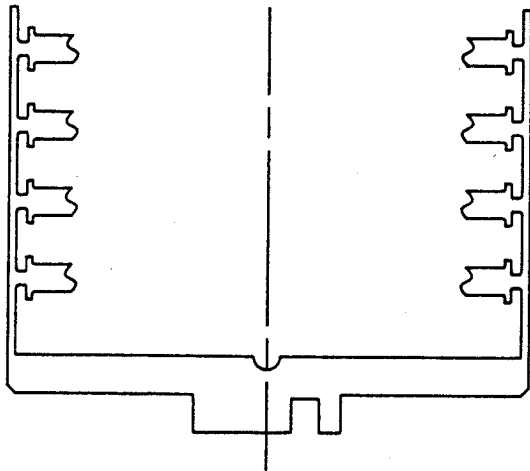
28 CD 12255H****

UNSPECIFIED RADII .005 MAX

 <p>STAMPING TECHNOLOGY CORPORATION Santa Clara, Ca 95050</p>	DRAWN H. G.	DATE 81-7-16	TITLE 28 PIN CERDIP		MATERIAL	REV.
	CHECKED NLS	81-9-11	NOMINAL FRAME PLAN		QTY:	X
	APPD KJ	81-9-11	SCALE NONE	SIZE A	DWG NBR 03-1225	
			SHEET 2			

BISHOP GRAPHICS/ACUPRESS
REORDER NO. A13841

28 PIN CERDIP
A
 03-1225



FORMING DIMENSIONS

NOMINAL FORM AS SHOWN

ROUNDED TO 2 PLACES

EX: .660 FORM ± .015

.66 SUFFIX 66

SUPPLY MODE

SINGULATED UNITS *** SUFFIX -S**

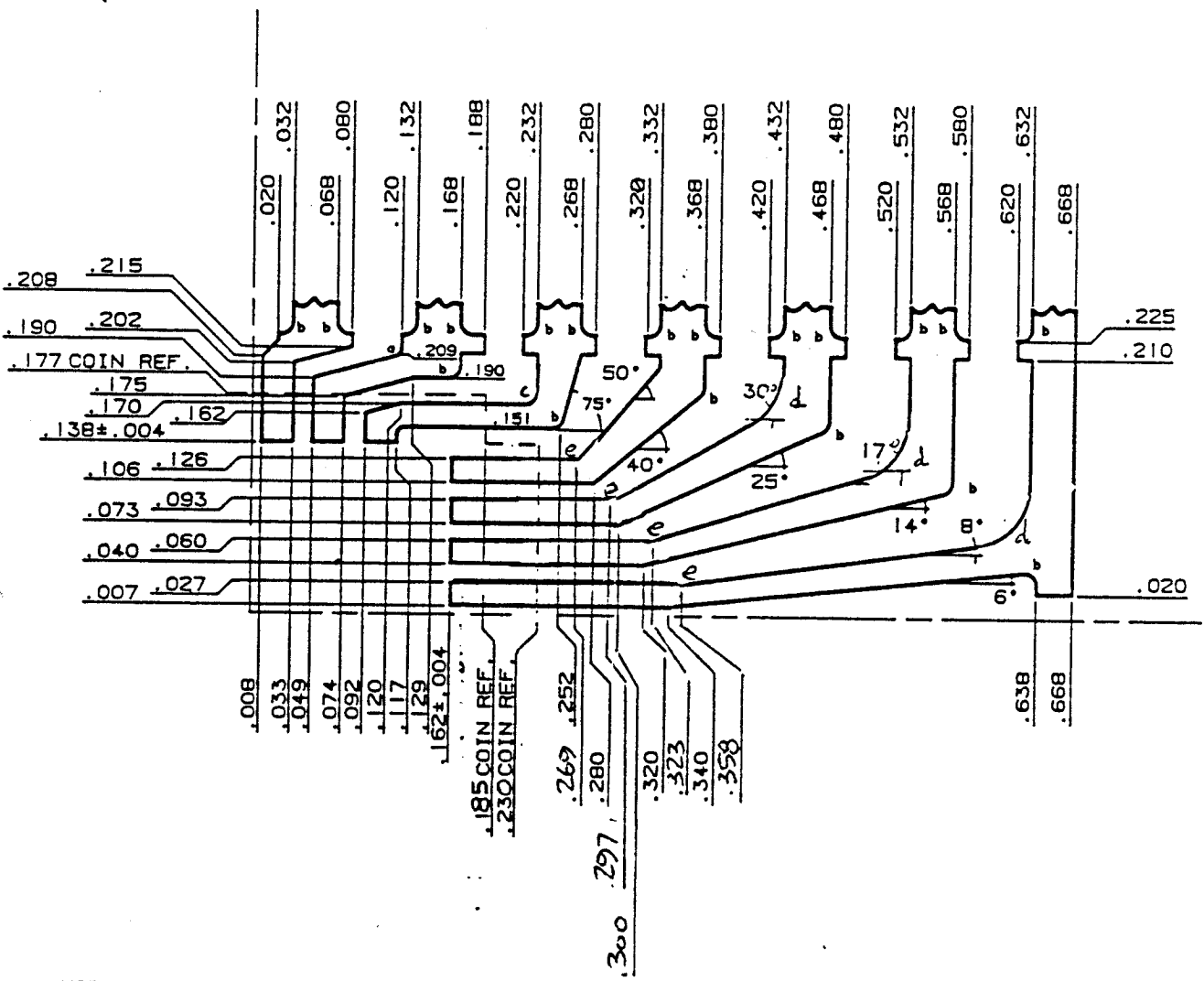


**STAMPING
TECHNOLOGY
CORPORATION**
Milpitas, Ca 95035

DRAWN R	DATE A-28-86
CHECKED R	A-19-86
APPD	

TITLE	28 LEAD CERDIP FRAME FORMING / SUPPLY MODE
SCALE	NONE
SHEET	3

SIZE	DWG NBR	REV
A	03-1225	AA



- NOTES:
- 1.- UNSPECIFIED RADII .005 MAX.
 - 2.- " a " = .006 R.
" b " = .010 R.
 3. " c " = .015 R
 4. " d " = .050 R
 5. " e " = .025 R

28CD1225SHI-3228



**STAMPING
TECHNOLOGY
CORPORATION**
Milpitas, Ca 95035

DRAWN VP	DATE 09 29 88	TITLE 28 LEAD CERDIP " HI " FORMAT .324 X .276 CAVITY	MATERIAL ALLOY 42	REV X
CHECKED VP	DATE 09 29 88	SCALE 7 X	SIZE A	DWG NO
APPRO		SHEET H2		03-1225