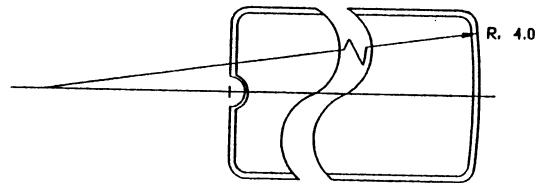
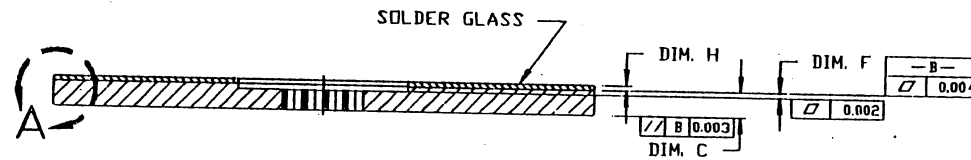
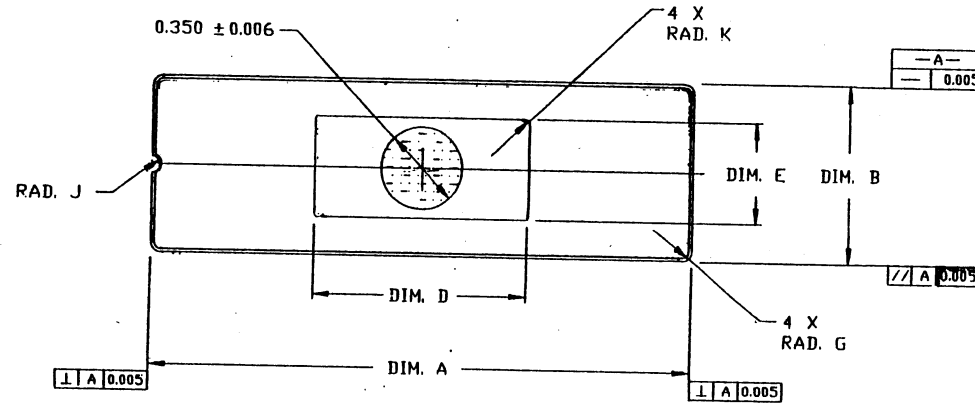
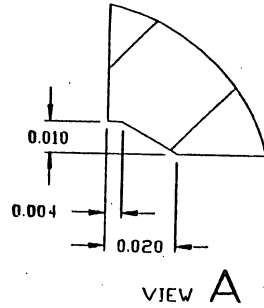


SSM P/N CDC02863

NOTES:

1. INTERPRET DRAWING PER DOD-STD-100.
2. MATERIAL: BLACK ALUMINA 90%
3. SOLDER GLASS TO BE KC700 OR T187BF.
4. CAVITY TO BE BARE CERAMIC.

REVISIONS					
ZONE	REV	ECN	DESCRIPTION	DATE	APPROVED
	**	274	NEW RELEASE	10/15/91	
	**A	321	CHG WINDOW SIZE	02/06/92	



DIM. A	DIM. B	DIM. C	DIM. D	DIM. E	DIM. F	RAD. G	DIM. H	RAD. J	RAD. K
1.450 ±0.010	0.520 ±0.005	0.052 ±0.004	0.560 ±0.004	0.380 ±0.004	0.018 ±0.003	0.040 ±0.010	0.012 0.018	0.025 ±0.005	0.020 ±0.010

UNLESS OTHERWISE SPECIFIED		DESIGNED BY	DATE
ALL DIMENSIONS ARE IN INCHES TOLERANCES FOR DECIMALS ARE:		DRW BY	DATE
DECIMALS	±0.002	JMB	2/24/90
2X	±0.002	CHK BY	SITE
3XXX	±0.002	APPROVED BY	DATE
		APPROVED BY	DATE
MATERIAL SEE NOTE 2		TITLE 28.6 CERDIP WINDOW CAP - 330 X 560	
FINISH		SIZE: A	
		SCALE 2 X 1	
		REV *A	
		SHEET 1 OF 1	



SPECTRUM
SEMICONDUCTOR MATERIALS, INC.

www.spectrum-semi.com Phone: 408-435-5555 Fax: 408-435-8226