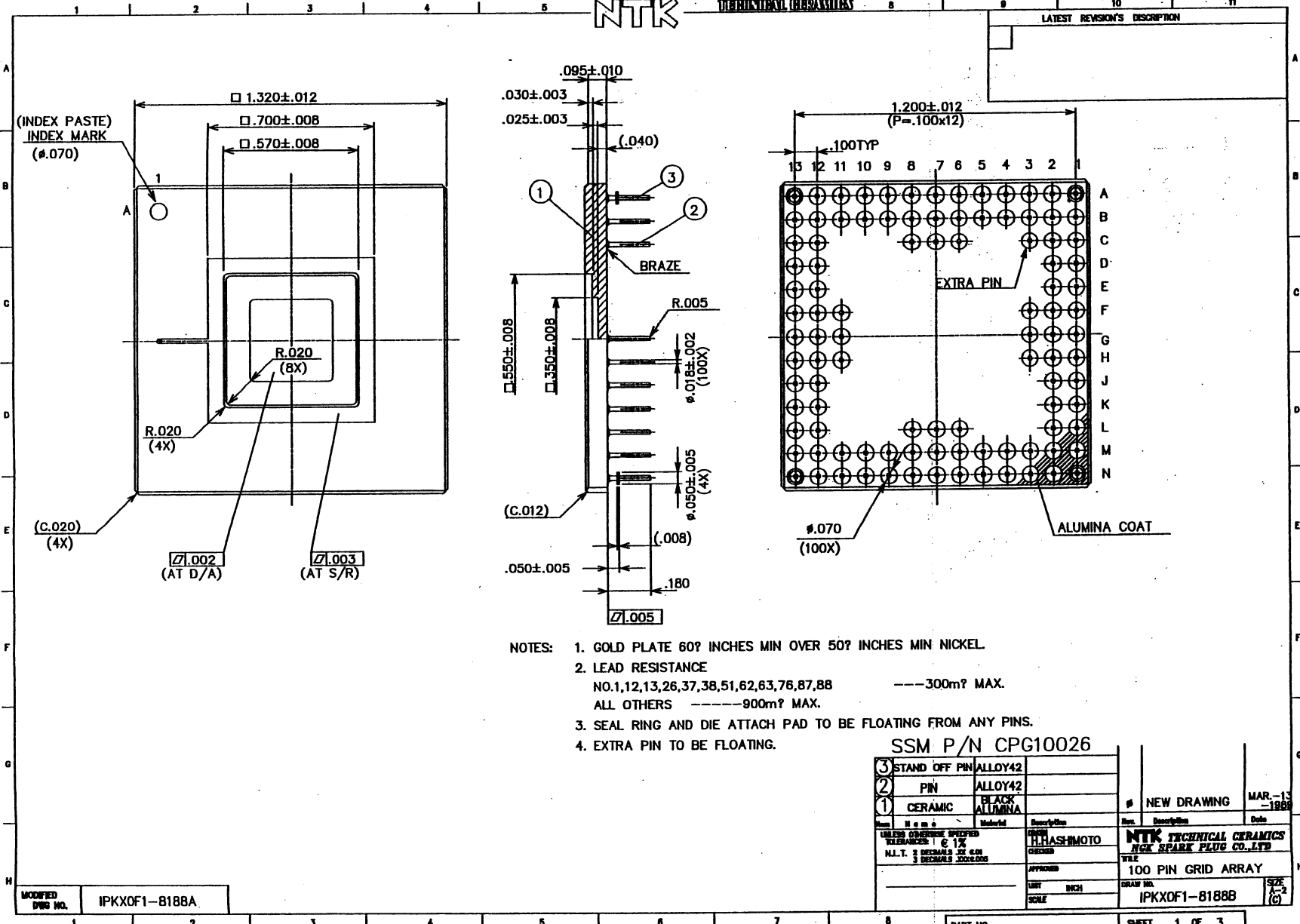


# SSM P/N CPG10026

NTK

TECHNICAL CERAMICS

LATEST REVISION'S DESCRIPTION



- NOTES:
1. GOLD PLATE 60? INCHES MIN OVER 50? INCHES MIN NICKEL.
  2. LEAD RESISTANCE  
NO.1,12,13,26,37,38,51,62,63,76,87,88 ---300m? MAX.  
ALL OTHERS -----900m? MAX.
  3. SEAL RING AND DIE ATTACH PAD TO BE FLOATING FROM ANY PINS.
  4. EXTRA PIN TO BE FLOATING.

SSM P/N CPG10026

|   |               |               |   |                                      |                                    |
|---|---------------|---------------|---|--------------------------------------|------------------------------------|
| 3   | STAND OFF PIN | ALLOY42       |   |                                      |                                    |
| 2   | PIN           | ALLOY42       |   |                                      |                                    |
| 1   | CERAMIC       | BLACK ALUMINA |   |                                      |                                    |
| <small>UNLESS OTHERWISE SPECIFIED<br/>DIMENSIONS 1 &amp; 12<br/>M.L.T. 3 DECIMALS 22 6.00<br/>3 DECIMALS 3000.000</small> |               |               | <small>DATE</small><br>11/18/88                   | <small>REV.</small><br># NEW DRAWING | <small>DATE</small><br>MAR-13-1988 |
| <small>DESIGNED BY</small><br>T. HASHIMOTO  |               |               | NTK TECHNICAL CERAMICS<br>NGK SPARK PLUG CO. LTD. |                                      |                                    |
| <small>APPROVED BY</small><br>[Signature]   |               |               | <small>TITLE</small><br>100 PIN GRID ARRAY        |                                      |                                    |
| <small>UNIT</small><br>INCH   |               |               | <small>DRAW NO.</small><br>IPKXOF1-8188B          |                                      |                                    |
| <small>SCALE</small><br>[Blank]   |               |               | <small>SIZE</small><br>A-2 (C)                    |                                      |                                    |

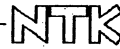
MODIFIED DWG NO. IPKXOF1-8188A

PART NO. SHEET 1 OF 3





# SSM P/N CPG10026



TECHNICAL CERAMICS

LATEST REVISION'S DESCRIPTION

CONNECTION TABLE

| PAD | PIN | PAD | PIN | PAD | PIN | PAD | PIN | PAD | PIN |
|-----|-----|-----|-----|-----|-----|-----|-----|-----|-----|
| 1   | B2  | 21  | K2  | 41  | M8  | 61  | H13 | 81  | A10 |
| 2   | B1  | 22  | L1  | 42  | L8  | 62  | G12 | 82  | B9  |
| 3   | C2  | 23  | M1  | 43  | N9  | 63  | G11 | 83  | A9  |
| 4   | C1  | 24  | L2  | 44  | M9  | 64  | G13 | 84  | C8  |
| 5   | D2  | 25  | N1  | 45  | N10 | 65  | F13 | 85  | B8  |
| 6   | D1  | 26  | M2  | 46  | M10 | 66  | F12 | 86  | A8  |
| 7   | E2  | 27  | N2  | 47  | N11 | 67  | F11 | 87  | B7  |
| 8   | E1  | 28  | M3  | 48  | N12 | 68  | E13 | 88  | C7  |
| 9   | F3  | 29  | N3  | 49  | M11 | 69  | E12 | 89  | A7  |
| 10  | F2  | 30  | M4  | 50  | N13 | 70  | D13 | 90  | A6  |
| 11  | F1  | 31  | N4  | 51  | M12 | 71  | D12 | 91  | B6  |
| 12  | G2  | 32  | M5  | 52  | M13 | 72  | C13 | 92  | C6  |
| 13  | G3  | 33  | N5  | 53  | L12 | 73  | B13 | 93  | A5  |
| 14  | G1  | 34  | L6  | 54  | L13 | 74  | C12 | 94  | B5  |
| 15  | H1  | 35  | M6  | 55  | K12 | 75  | A13 | 95  | A4  |
| 16  | H2  | 36  | N6  | 56  | K13 | 76  | B12 | 96  | B4  |
| 17  | H3  | 37  | M7  | 57  | J12 | 77  | A12 | 97  | A3  |
| 18  | J1  | 38  | L7  | 58  | J13 | 78  | B11 | 98  | A2  |
| 19  | J2  | 39  | N7  | 59  | H11 | 79  | A11 | 99  | B3  |
| 20  | K1  | 40  | N8  | 60  | H12 | 80  | B10 | 100 | A1  |

MODIFIED  
DWG NO. IPKXOF1-8188A

SSM P/N CPG10026

UNLESS OTHERWISE SPECIFIED  
DIMENSIONS: ± 0.1%  
M.L.T. 3 DECIMALS BY A.M.  
3 DECIMALS 3000.0000

NAME  
H. HASHIMOTO  
CHECKED

APPROVED  
UNIT INCH  
SCALE

NEW DRAWING MAR-13-1988

NTK TECHNICAL CERAMICS  
NCK SPARK PLUG CO. LTD

CONNECTION TABLE

DRAWING NO. IPKXOF1-8188B

SIZE  
A-2  
(C)

PART NO.

SHEET 3 OF 3



www.spectrum-semi.com Phone: 408-435-5555 Fax: 408-435-8226