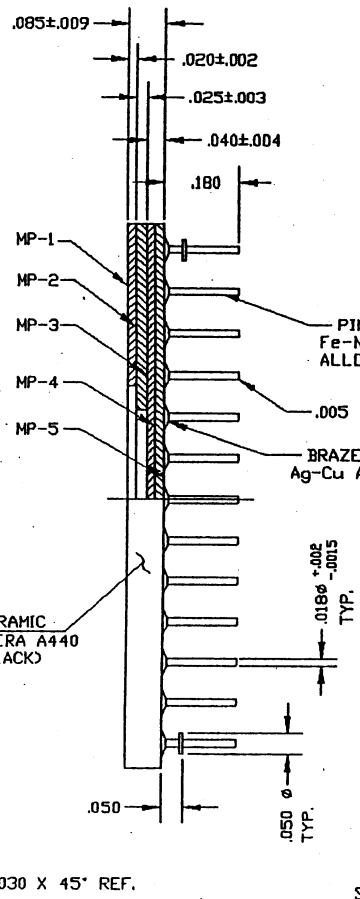
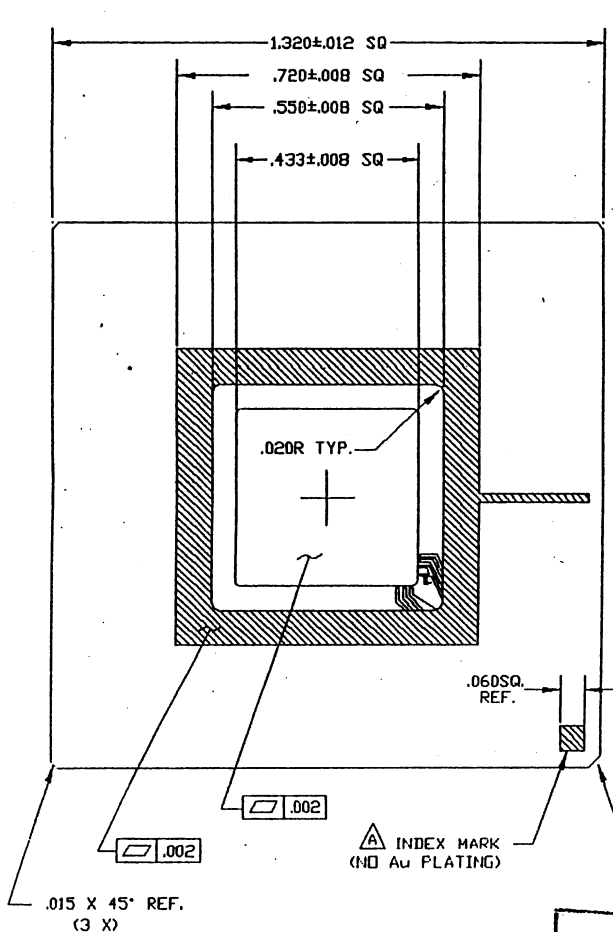
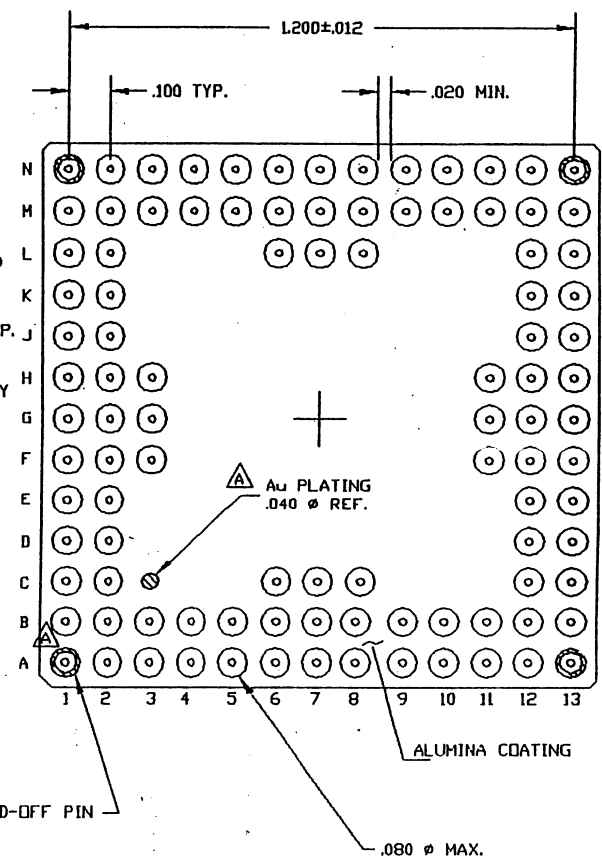


# SSM P/N CPG10032



REVISIONS				
ZONE	REV	ECN	DESCRIPTION	DATE
	NA	624	NEW RELEASE	11/15/93
	NA	673	ADD CHAMFER AT CORNERS	12/28/93



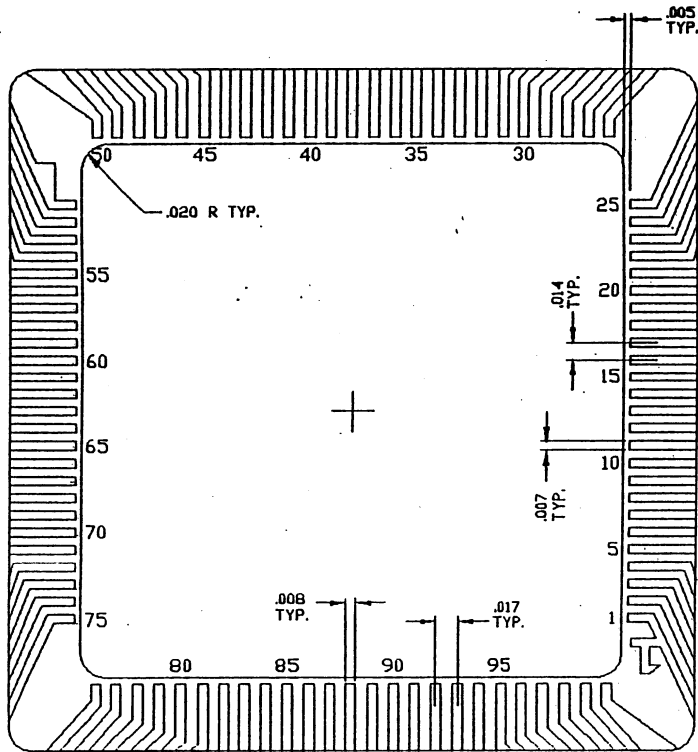
- NOTES:
- SPEC #03-00024 SHALL APPLY.
  - SEAL RING AREA TO BE METALLIZED.
  - DIE ATTACH AREA TO BE NOT METALLIZED.
  - SEAL RING TO BE FLOATING FROM ANY PINS.
  - LEAD RESISTANCE: 500 mΩ MAX.
  - COMPLY TO MIL-STD-1835. CASEOUTLINE P-BE.

DOCUMENT CONTROL  
 MAR 16 1999  
 CONTROLLED COPY

UNLESS OTHERWISE SPECIFIED		DESIGNED BY	DATE
ALL DIMENSIONS ARE IN INCHES		DRN	DATE
STANDARD TOLERANCES IN DECIMALS		HTN	12/28/93
ANGLES		CHK'D BY	DATE
30°		APPROVED BY	DATE
45°		APPROVED BY	DATE
60°			
MATERIAL			
FINISH			
TITLE: 100 LD PGA 433 X 433			
SIZE	PART NO.	DWG NO.	REV
C	PGA1001	51-20249	NA
SCALE: 5 X			SHEET 1 OF 2



SSM P/N CPG10032



BONDING PATTERN  
SCALE: 15: 1

REVISIONS				DATE	AP
ZONE	REV	ECN	DESCRIPTION		

W/B NO.	PIN NO.	W/B NO.	PIN NO.	W/B NO.	PIN NO.	W/B NO.	PIN NO.	W/B NO.	PIN NO.
1	B2	21	K2	41	M8	61	H13	81	A10
2	B1	22	L1	42	L8	62	G12	82	B9
3	C2	23	M1	43	N9	63	G11	83	A9
4	C1	24	L2	44	M9	64	G13	84	C8
5	D2	25	N1	45	N10	65	F13	85	B8
6	D1	26	M2	46	M10	66	F12	86	A8
7	E2	27	N2	47	N11	67	F11	87	B7
8	E1	28	M3	48	M12	68	E13	88	C7
9	F3	29	N3	49	M11	69	E12	89	A7
10	F2	30	M4	50	M13	70	D13	90	A6
11	F1	31	N4	51	M12	71	D12	91	B6
12	G2	32	M5	52	M13	72	C13	92	C6
13	G3	33	N5	53	L12	73	B13	93	A5
14	G1	34	L6	54	L13	74	C12	94	B5
15	H1	35	M6	55	K12	75	A13	95	A4
16	H2	36	N6	56	K13	76	B12	96	B4
17	H3	37	M7	57	J12	77	A12	97	A3
18	J1	38	L7	58	J13	78	B11	98	A2
19	J2	39	N7	59	H11	79	A11	99	B3
20	K1	40	N8	60	H12	80	B10	100	A1

UNLESS OTHERWISE SPECIFIED		DESIGNED BY	DATE	TITLE		SIZE	PART NO.	DWG NO.	REV
ALL DIMENSIONS ARE IN INCHES		HTN	12/28/92	100 LD PGA 433 X 433		C	PGA1001	51-20249	*A
STANDARD TOLERANCES ON		APPROVED BY	DATE	SCALE NOTED		SHEET 2 OF 2			
DECIMALS	FRACTIONS								
± .005	± 1/64								
± .010	± 1/32								
± .015	± 1/16								
± .020	± 1/8								
± .030	± 3/32								
± .040	± 1/16								
± .050	± 1/16								
± .060	± 1/16								
± .070	± 1/16								
± .080	± 1/16								
± .090	± 1/16								
± .100	± 1/16								

