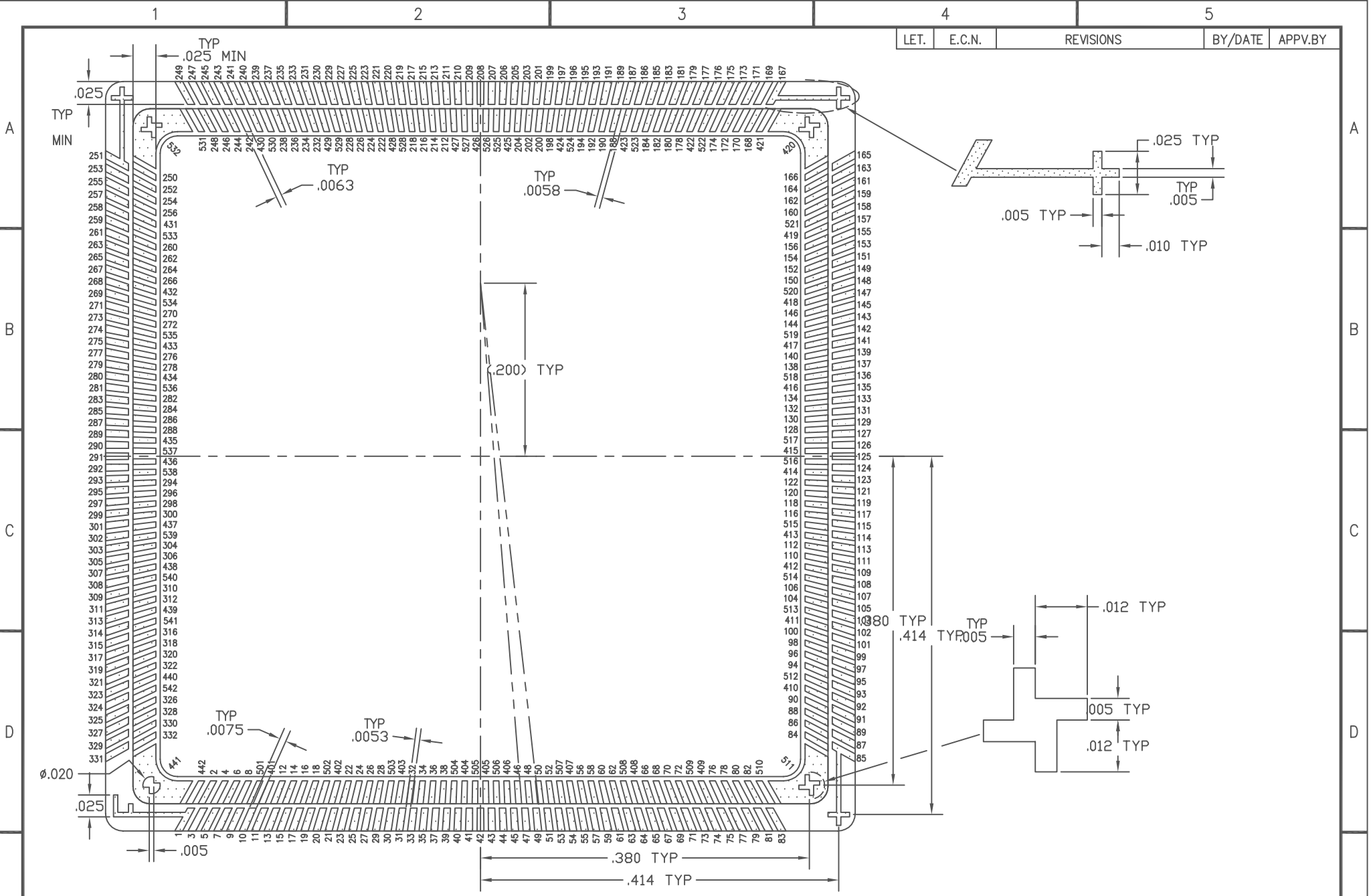


- NOTES:
- METALLIZATION/PLATING:
TUNGSTEN (OR EQUIV)/NICKEL (40u") AND GOLD (60u"MIN).
 - INDEX MARKS (TOP & BOTTOM) NOT CONNECTED TO ANY I/O PINS.
 - KOVAR STUD TO WITHSTAND 35 IN-LBS TORQUE.

CAUTION: THIS TECHNOLOGY UNDER U.S. EXPORT CONTROL

COMPANY CONFIDENTIAL	SCALE 1X	SHEET INDEX	REV.																			
	DRAWN BY J. REYNOSO		DATE 04-12-94	SHEET	1	2	3	4	5	6	7	8	9	10	11	12	13	14	15	16	17	18
TOLERANCE UNLESS SPECIFIED ±1% NLT .005	CHK BY	CHK BY	NAME 391PGA																			
1/2" ON ANGULAR DIM.	APPROVED BY Y. Hamano		DATE 4-13-94	MATERIAL KYOCERA A-440 (BLACK)																		
ALL DIM. ARE IN MM	ALL DIM. ARE IN INCHES x		PROJECT No. 32639103																			
SAN DIEGO PLANT KYOCERA AMERICA, INC. 9550 BALBOA AVENUE SAN DIEGO, CA 92123-1600 Ph: [619]576-2800			DWG. No. SD-560-0147																			

LET.	E.C.N.	REVISIONS	BY/DATE	APPV.BY
------	--------	-----------	---------	---------



CAUTION: THIS TECHNOLOGY UNDER U.S. EXPORT CONTROL

COMPANY CONFIDENTIAL	SCALE 1X	SHEET INDEX	REV.																			
	DRAWN BY J.REYNOSO		DATE 04-12-94	1	2	3	4	5	6	7	8	9	10	11	12	13	14	15	16	17	18	19
TOLERANCE UNLESS SPECIFIED ±1% NLT .005	CHK BY	CHK BY	NAME 391PGA (B/F DETAIL)																			
1/2" ON ANGULAR DIM.	APPROVED BY YH		DATE 04-13-94	MATERIAL KYOCERA A-440 (BLACK)																		
ALL DIM. ARE IN MM	ALL DIM. ARE IN INCHES X	PROJECT NO. 32639103																				
ALL DIM. ARE IN INCHES X		DWG. No. SD-560-0147																				
		2 / 13																				

KYOCERA
SAN DIEGO PLANT
KYOCERA AMERICA, INC.
803 BALBOA AVENUE
SAN DIEGO, CA 92108-1680
Ph: [619]576-2800

1

2

3

4

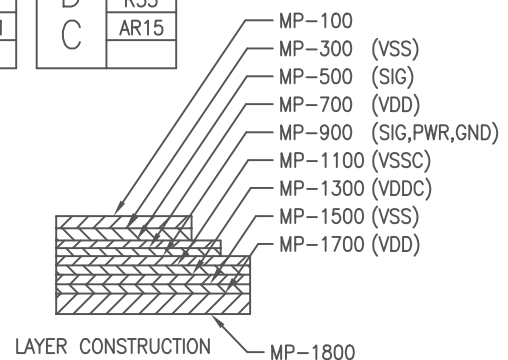
5

LET.	E.C.N.	REVISIONS	BY/DATE	APPV.BY
------	--------	-----------	---------	---------

PAD No.	PIN No.	PAD No.	PIN No.	PAD No.	PIN No.	PAD No.	PIN No.	PAD No.	PIN No.	PAD No.	PIN No.	PAD No.	PIN No.	PAD No.	PIN No.
1	F6	43	C19	85	G31	127	W35	169	AP34	211	AM18	253	AH6	295	U5
2	B2	44	A19	86	B34	128	W31	170	AK28	212	AL17	254	AM4	296	U7
3	E7	45	E19	87	H30	129	V32	171	AM32	213	AJ17	255	AG7	297	T2
4	D4	46	B20	88	D32	130	Y34	172	AJ27	214	AP16	256	AM2	298	T6
5	F8	47	D18	89	J29	131	W29	173	AP32	215	AK16	257	AG5	299	T4
6	B4	48	D20	90	D34	132	Y32	174	AL27	216	AM16	258	AK4	300	R5
7	G9	49	G19	91	J31	133	Y30	175	AM30	217	AP14	259	AF6	301	P2
8	D6	50	B22	92	F32	134	AB34	176	AK26	218	AN15	260	AL3	302	R3
9	E9	51	F20	93	K30	135	AA33	177	AN31	219	AL15	261	AH4	303	M2
10	C5	52	C21	94	E33	136	AD34	178	AM28	220	AP12	262	AK2	304	R7
11	F10	53	B24	95	H32	137	AA31	179	AP30	221	AJ15	263	AE7	305	P4
12	D8	54	D22	96	F34	138	AB32	180	AJ25	222	AM14	264	AF4	306	P6
13	B6	55	E21	97	L29	139	AA29	181	AM26	223	AK14	265	AE5	307	K2
14	D10	56	B26	98	K32	140	AF34	182	AL25	224	AP10	266	AJ3	308	N5
15	G11	57	G21	99	L31	141	AB30	183	AN29	225	AL13	267	AD6	309	N3
16	C7	58	C23	100	G33	142	AC33	184	AK24	226	AN13	268	AE3	310	J3
17	E11	59	F22	101	M30	143	AC31	185	AN25	227	AN9	269	AC7	311	M4
18	C11	60	C27	102	L33	144	AG33	186	AJ23	228	AM12	270	AH2	312	N7
19	F12	61	E23	103	N29	145	AD32	187	AP28	229	AJ13	271	AD4	313	H2
20	B8	62	D24	104	H34	146	AC29	188	AM24	230	AP8	272	AG3	314	M6
21	G13	63	B28	105	M32	147	AH34	189	AN27	231	AK12	273	AC5	315	L3
22	D12	64	G23	106	J33	148	AD30	190	AL23	232	AN11	274	AC3	316	L5
23	C9	65	C25	107	N31	149	AE33	191	AN23	233	AL11	275	AB6	317	G3
24	C13	66	F24	108	N33	150	AE31	192	AK22	234	AN7	276	AF2	318	L7
25	E13	67	C29	109	P30	151	AJ33	193	AP26	235	AJ11	277	AA7	319	K4
26	B10	68	E25	110	K34	152	AE29	194	AJ21	236	AM10	278	AB4	320	F2
27	F14	69	D26	111	R29	153	AF32	195	AM22	237	AP6	279	AA5	321	H4
28	D14	70	G25	112	P32	154	AK34	196	AL21	238	AM8	280	AD2	322	K6
29	G15	71	B30	113	R31	155	AH32	197	AP24	239	AK10	281	AA3	323	E3
30	B12	72	D28	114	M34	156	AF30	198	AN21	240	AN5	282	AB2	324	J5
31	E15	73	C31	115	R33	157	AL33	199	AP22	241	AL9	283	Y6	325	F4
32	C15	74	F26	116	P34	158	AG31	200	AK20	242	AM6	284	Y4	326	J7
33	B14	75	D30	117	T30	159	AK32	201	AM20	243	AJ9	285	W7	327	D2
34	D16	76	E27	118	T32	160	AG29	202	AJ19	244	AP4	286	Y2	328	H6
35	F16	77	B32	119	U29	161	AM34	203	AP20	245	AK8	287	V6	329	E5
36	B16	78	G27	120	T34	162	AH30	204	AK18	246	AL5	288	W5	330	G5
37	G17	79	E31	121	V30	163	AL31	205	AL19	247	AL7	289	W1	331	C3
38	E17	80	F28	122	U31	164	AJ31	206	AR19	248	AN3	290	W3	332	G7
39	F18	81	C33	123	U35	165	AN33	207	AN19	249	AJ7	291	V2		
40	A17	82	E29	124	U33	166	AJ29	208	AP18	250	AK6	292	U3		
41	C17	83	G29	125	V34	167	AK30	209	AN17	251	AJ5	293	U1		
42	B18	84	F30	126	W33	168	AL29	210	AR17	252	AP2	294	V4	S/R	NC
														D/A	NC

V	A3
	A7
	A11
	A23
	A27
	A31
	A35
	E35
	J35
	AE35
S	AJ35
	AN35
	AR33
	AR29
	AR25
	AR13
	AR9
	AR5
	AR1
	AL1
S	AG1
	L1
	G1
	C1
	AC1
	R1
	A15
	AA35
	N35
	AR21

V	A5
	A9
	A13
	A25
	A29
	A33
	C35
	G35
	L35
	AG35
D	AL35
	AR35
	AR31
	AR27
	AR23
	AR11
	AR7
	AR3
	AN1
	AJ1
D	AE1
	J1
	E1
	AA1
	N1
	A21
	AC35
	R35
	AR15



NOTES:
 1. RESISTANCE: (B/F ~ THE CLOSEST PIN)
 B/F No.401~442 & 501~542 --- 100m Ω MAX
 B/F No.42,125,208,291 --- 500m Ω MAX
 THE OTHERS --- 1000m Ω MAX

VSS: 401,402,403,404,405,407,408,409,410,411,413
 414,415,416,418,419,420,422,423,424,426,427
 428,429,430,431,432,434,435,436,437,439,440,441
 VDD: 501,502,503,504,505,507,508,509,511,512,513
 515,516,517,518,520,521,522,523,524,526,527
 528,529,530,532,533,534,536,537,538,539,541,542
 VSSC: 406,412,417,421,425,433,438,442
 VDDC: 506,510,514,519,525,531,535,540

CAUTION: THIS TECHNOLOGY UNDER U.S. EXPORT CONTROL

COMPANY CONFIDENTIAL	SCALE 1X	SHEET INDEX	REV.																				
	TOLERANCE UNLESS SPECIFIED		DRAWN BY J.REYNOSO	DATE 04-12-94	SHEET	1	2	3	4	5	6	7	8	9	10	11	12	13	14	15	16	17	18
1/2" ON ANGULAR DIM. ALL DIM. ARE IN MM ALL DIM. ARE IN INCHES x	CHK BY	APPROVED BY Y. Hamano	NAME NETLIST		PROJECT No.		DWG. No. SD-560-0147		3		13												
			SAN DIEGO PLANT KYOCERA AMERICA, INC. 8911 BALBOA AVENUE SAN DIEGO, CA 92128-1600 Ph: (619)576-2600																				

1

2

3

4