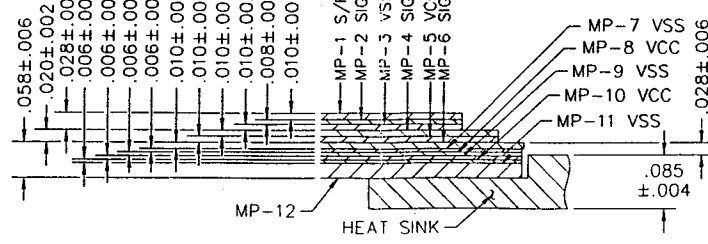
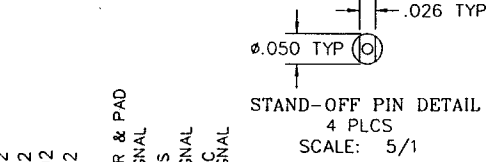
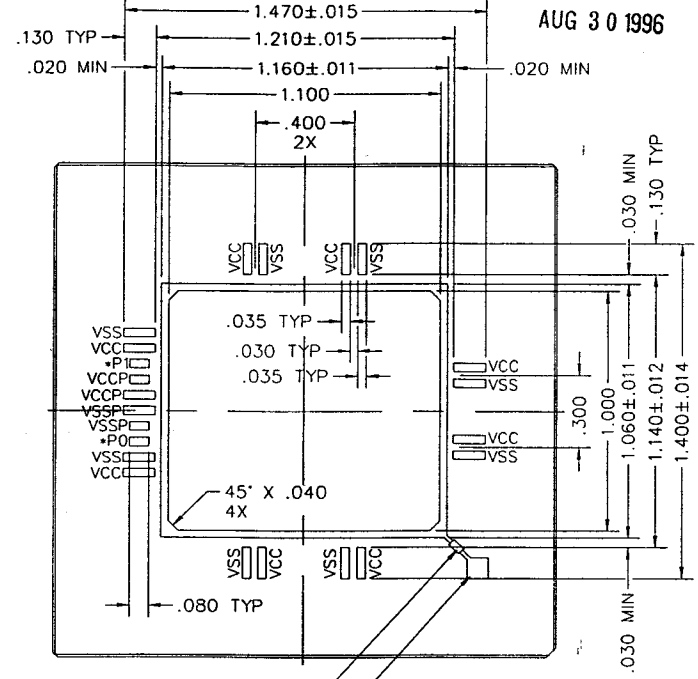
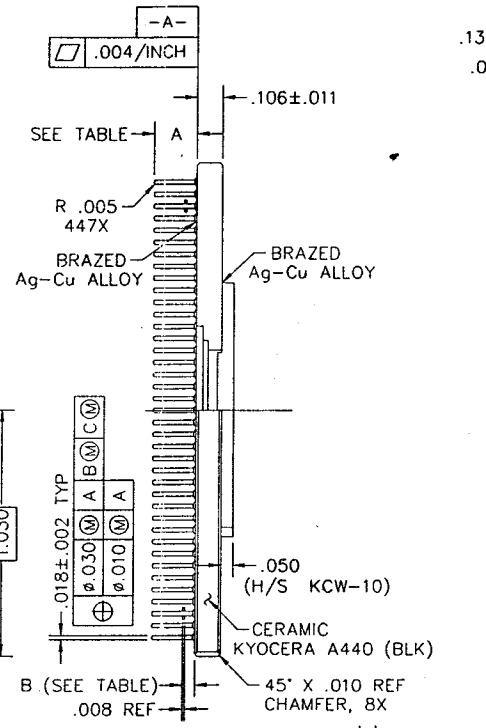
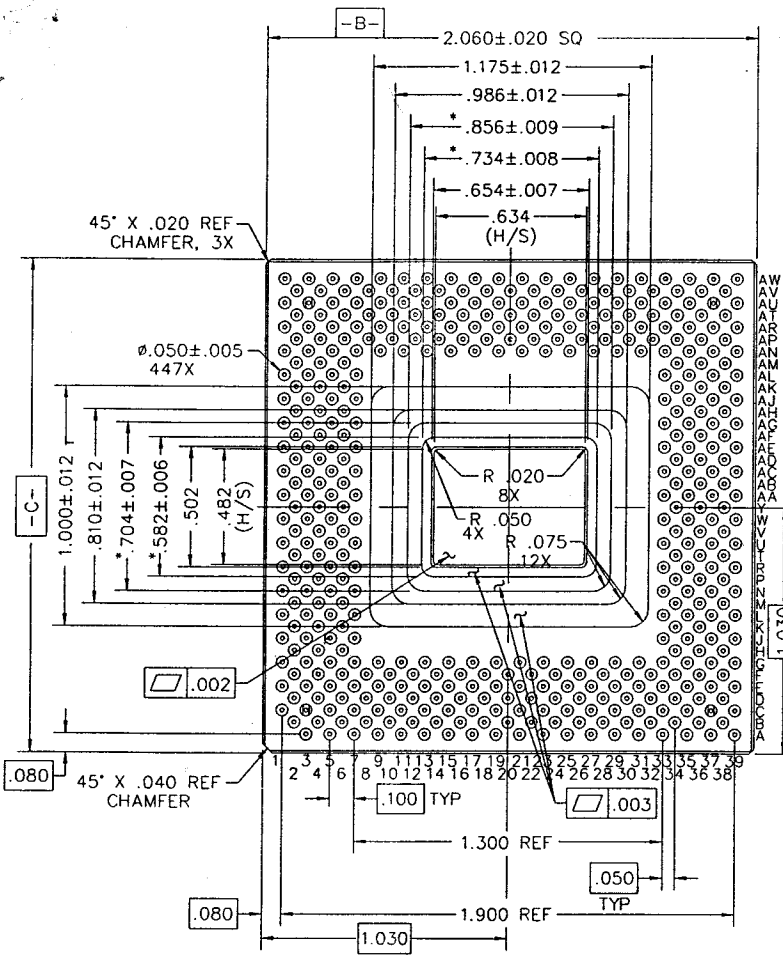


REVISIONS				
DCN	REV	DESCRIPTION	DATE	APPROVED
27560	01	ADDED OPTION 2	3/7/95	B. Buihamel
26680	02	CHANGED GOLD THICKNESS	2/18/96	205 [Signature]

AUG 30 1996



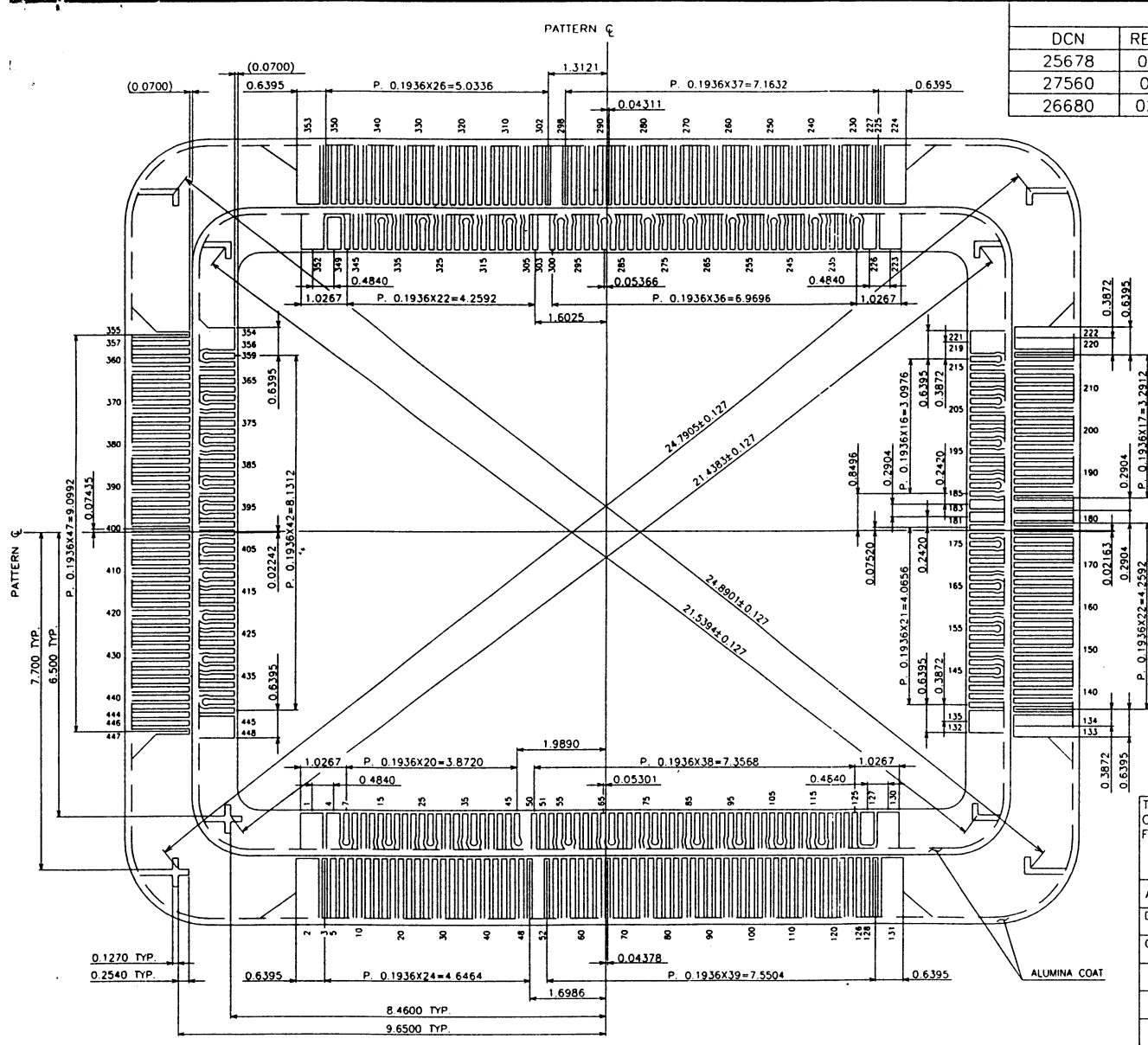
- NOTES: (UNLESS OTHERWISE SPECIFIED)
- PART SHALL CONFORM TO THE REQUIREMENTS OF SPEC MSC-0100.
 - PLATING TO BE 60μ" MIN Au OVER 100μ" MIN Ni.
 - SEAL AREA TO BE METALLIZED.
 - SEAL RING IS CONNECTED TO VSS.
 - HEAT SINK IS ELECTRICALLY ISOLATED FROM ANY PINS.
 - LEAD RESISTANCE: (CLOSEST PIN)
 SIGNAL = 2000 mΩ MAX
 VCC/VSS = 150 mΩ MAX
 VCCP/VSSP = 300 mΩ MAX
 +PO/+P1 = 500 mΩ MAX
 - * INDICATES DIMENSIONS OF TOP LAYER.

OPTION	PKG	STOCK #	LEAD LENGTH	
			A	B
1	GD	17-031-447	.180	.050
2	GL	17-033-447	.200	.070

TOLERANCES UNLESS OTHERWISE SPECIFIED
 FRACTION DEC ANGLE
 ± - ± .005 ± 1°

APPROVALS	DATE	SCALE 2/1
DRAWN: <i>Ad</i>	03/02/94	
CHECKED:		REV 02
STOCK NO. SEE TABLE		DRAWING NO. MSC-4531
DO NOT SCALE DRAWING		SHEET 1 OF 3

E17-031-447



REVISIONS				
DCN	REV	DESCRIPTION	DATE	APPROVED
25678	00	INITIAL RELEASE	4/7/94	B. Gulham
27560	01	ADDED OPTION 2	3/7/95	B. Gulham
26680	02	CHANGED GOLD THICKNESS	3/11/96	Lee

AUG 30 1996

W/B WIDTH	W/B No.
0.5046	1,2,130,131,(132,135), (133,134),(219,221), (220,222),223,224, 352,353,(354,356), (445,448)
0.3110	4,127,226,349
0.2142	181,183
0.1174	ALL OTHERS

BONDING PATTERN
UNIT : mm

TOLERANCES UNLESS OTHERWISE SPECIFIED
FRACTION DEC ANGLE
± - ± .127 ± 1'

APPROVALS	DATE			SCALE
DRAWN <i>Ad</i>	03/02/94	GD / GL 447 (.654 X .502)		8/1
CHECKED				SIZE B
		STOCK NO.	DRAWING NO.	REV
		SEE SHT 1	MSC-4531	02
DO NOT SCALE DRAWING			SHEET 2 OF 3	

E17-031-447

