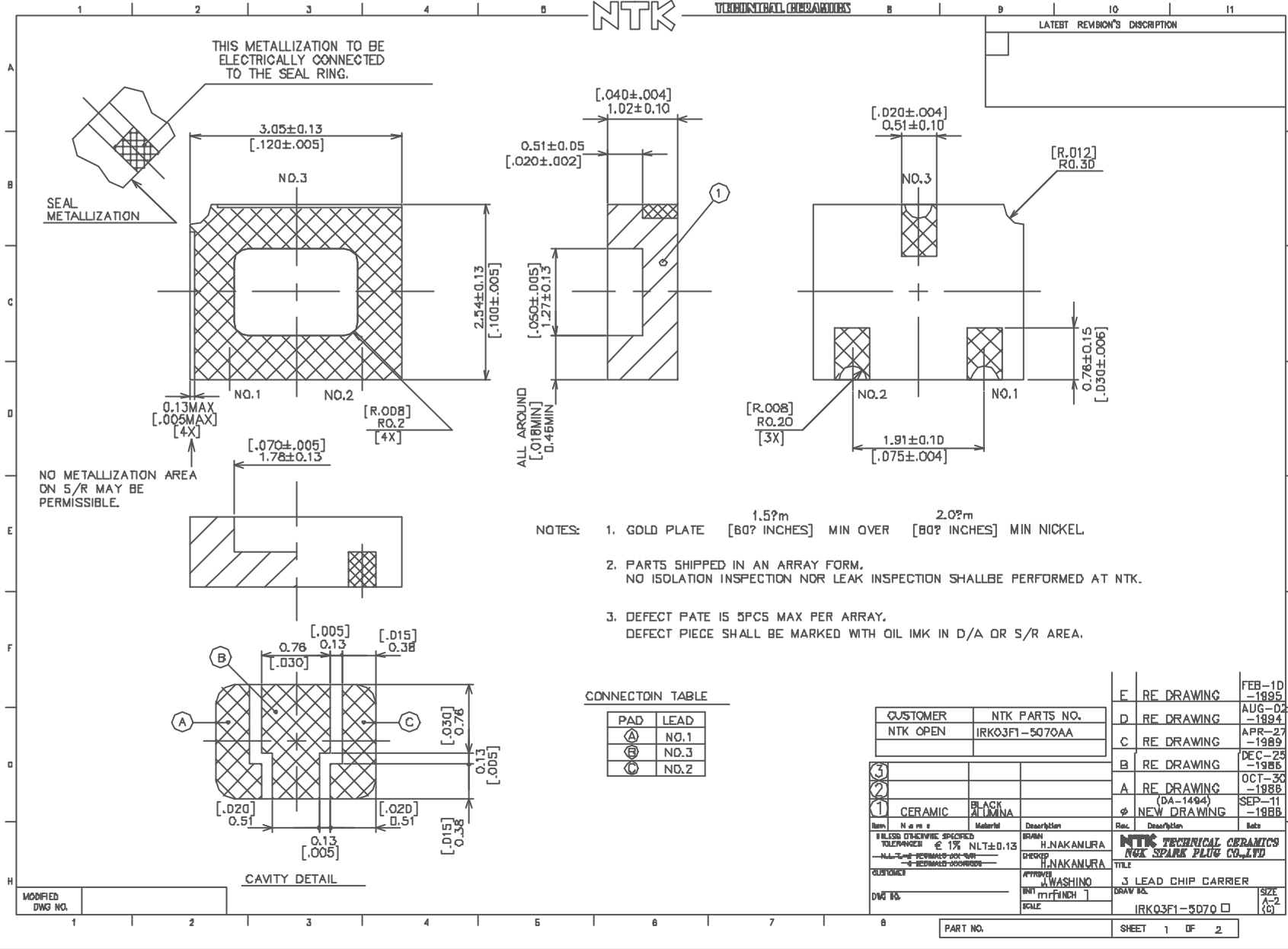


NTK

TECHNICAL CERAMICS

LATEST REVISION'S DESCRIPTION



THIS METALLIZATION TO BE ELECTRICALLY CONNECTED TO THE SEAL RING.

SEAL METALLIZATION

NO METALLIZATION AREA ON S/R MAY BE PERMISSIBLE.

ALL AROUND
[.018MIN]
0.45MIN

- NOTES:
1. GOLD PLATE [60? INCHES] MIN OVER [80? INCHES] MIN NICKEL
 2. PARTS SHIPPED IN AN ARRAY FORM. NO ISOLATION INSPECTION NOR LEAK INSPECTION SHALL BE PERFORMED AT NTK.
 3. DEFECT RATE IS 5PCS MAX PER ARRAY. DEFECT PIECE SHALL BE MARKED WITH OIL INK IN D/A OR S/R AREA.

CONNECTIN TABLE

PAD	LEAD
(A)	NO.1
(B)	NO.3
(C)	NO.2

CUSTOMER	NTK PARTS NO.
NTK OPEN	IRK03F1-5070AA

③			
②			
①	CERAMIC	BLACK ALUMINA	

DESIGNER	APPROVER
H.NAKAMURA	J. WASHINO
DATE	SCALE
1	1

E	RE DRAWING	FEB-10-1995
D	RE DRAWING	AUG-02-1994
C	RE DRAWING	APR-27-1989
B	RE DRAWING	DEC-25-1986
A	RE DRAWING	OCT-30-1986
	(DA-1494)	SEP-11-1986
	NEW DRAWING	
NTK TECHNICAL CERAMICS NGK SPARK PLUG CO., LTD		
TITLE		J LEAD CHIP CARRIER
DRAW NO.		SIZE A-2
IRK03F1-5070 □		(C)

MODIFIED DWG NO.

PART NO.

SHEET 1 OF 2



