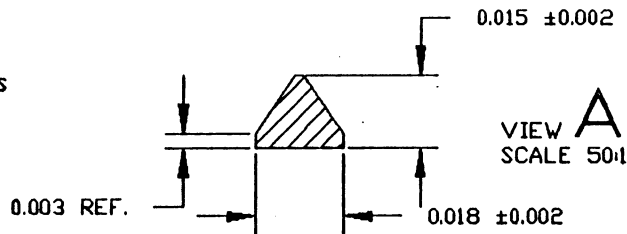


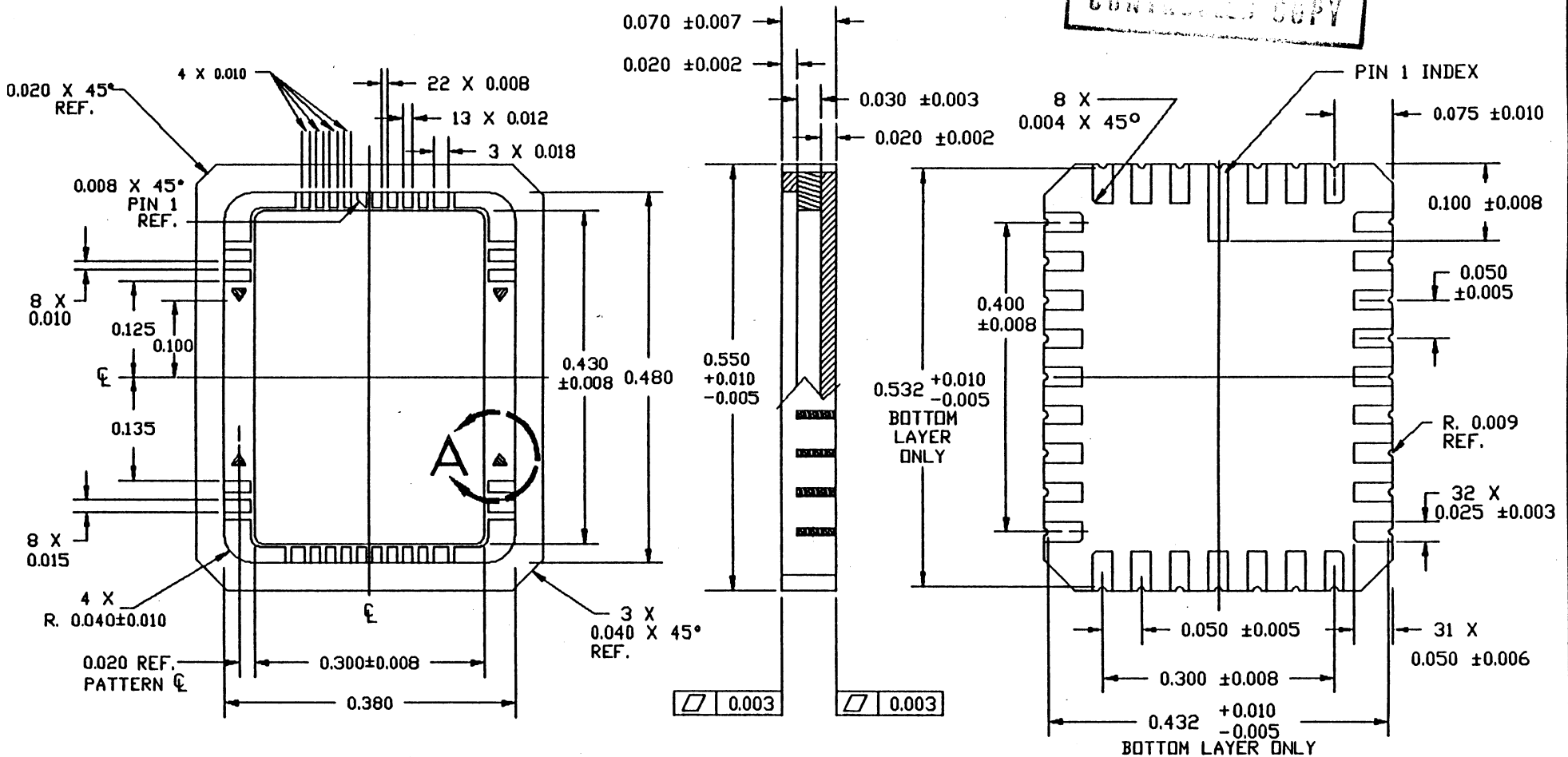
NOTES:

1. INTERPRET DRAWING PER DDD-STD-100.
2. DIMENSIONS ARE TYPICAL FOR ALL QUADRANTS UNLESS OTHERWISE SPECIFIED.
3. FINISH: GOLD PLATE 80μ INCHES MIN. OVER 80μ INCHES MIN. NICKEL.
4. DIE ATTACH CAVITY AND SEAL RING WILL BE ELECTRICALLY ISOLATED.
5. LEAD RESISTANCE: 308 mΩ MAX.
6. NO METAL ALLOWED ON CORNERS.
7. NO METAL IN D/A CAVITY.

REVISIONS					
ZONE	REV	ECM	DESCRIPTION	DATE	APPROVED
	MM		INITIAL RELEASE		
	MA	439	ADD SR LD RAD.	08/31/92	



08/31/92
 CONTROL COPY



UNLESS OTHERWISE SPECIFIED		DESIGNED BY	DATE
ALL DIMENSIONS ARE IN INCHES		DRAWN	DATE
STANDARD TOLERANCES & FITS		HTN	08/31/92
DECIMALS		CHK BY	DATE
XX ± 0.01	ANGLES	APPROVED BY	DATE
XXX ± 0.005	1° & 30'	APPROVED BY	DATE
XXXX ±			
MATERIAL			
FINISH SEE NOTE 3			

LCC03229

TITLE 32 LD LCC 300 X 430			
SIZE C	PART NO. LCC32R6	DWG NO. 51-20080	REV. *A
SCALE 10:1			SHEET 1 OF 1