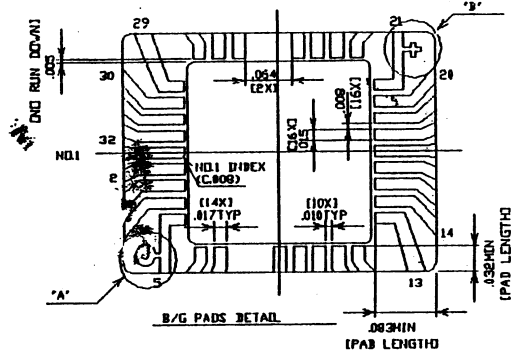
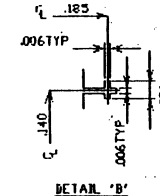
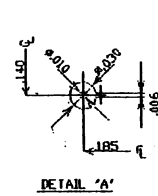
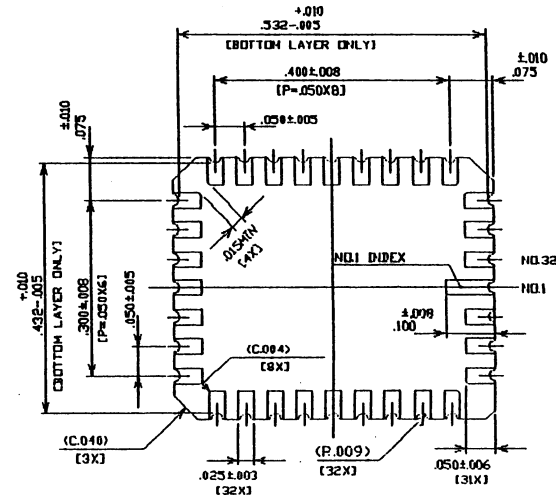
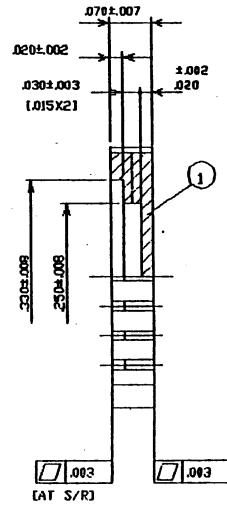
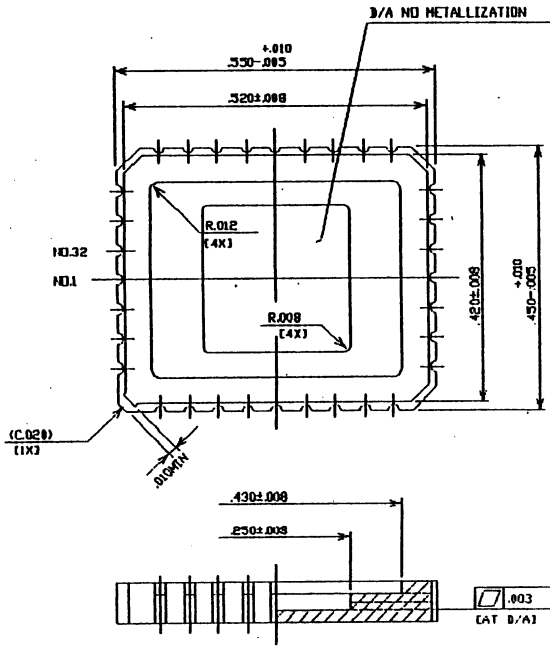


SSM P/N LCC03250

REVISIONS					
ZONE	REV	ECN	DESCRIPTION	DATE	APPROVED
	**	1512	NEW RELEASE	03/07/98	



NOTES:

1. GOLD PLATE 80 μ INCHES MIN OVER 80 μ INCHES MIN NICKEL.
2. SEAL RING TO BE ELECTRICALLY ISOLATED.
3. RESISTANCE: ----- 300m Ω MAX

LCC03250

UNLESS OTHERWISE SPECIFIED		DESIGNED BY	DATE
ALL DIMENSIONS ARE IN INCHES		DRW	DATE
STANDARD TOLERANCES ARE:		HTN	03/07/98
DECIMALS	ANGLES	CHK BY	DATE
.XX = .01	MINUS = 1"		
.XXX = .005		APPROVED BY	DATE
.XXXX = /			
MATERIAL		APPROVED BY	DATE
FINISH			
TITLE 32LD LCC 250 X 250 BASE			
SIZE	PART NO.	DWG NO.	REV
C	LCC32R29	51-20263	**
SCALE	7 X		SHEET 1 OF 1

