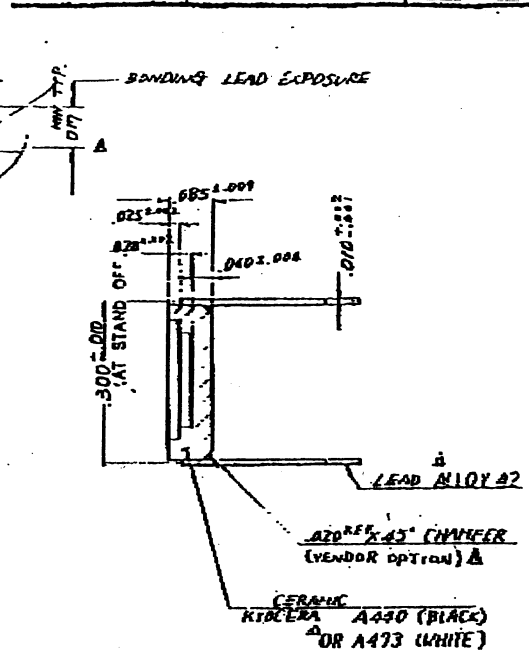
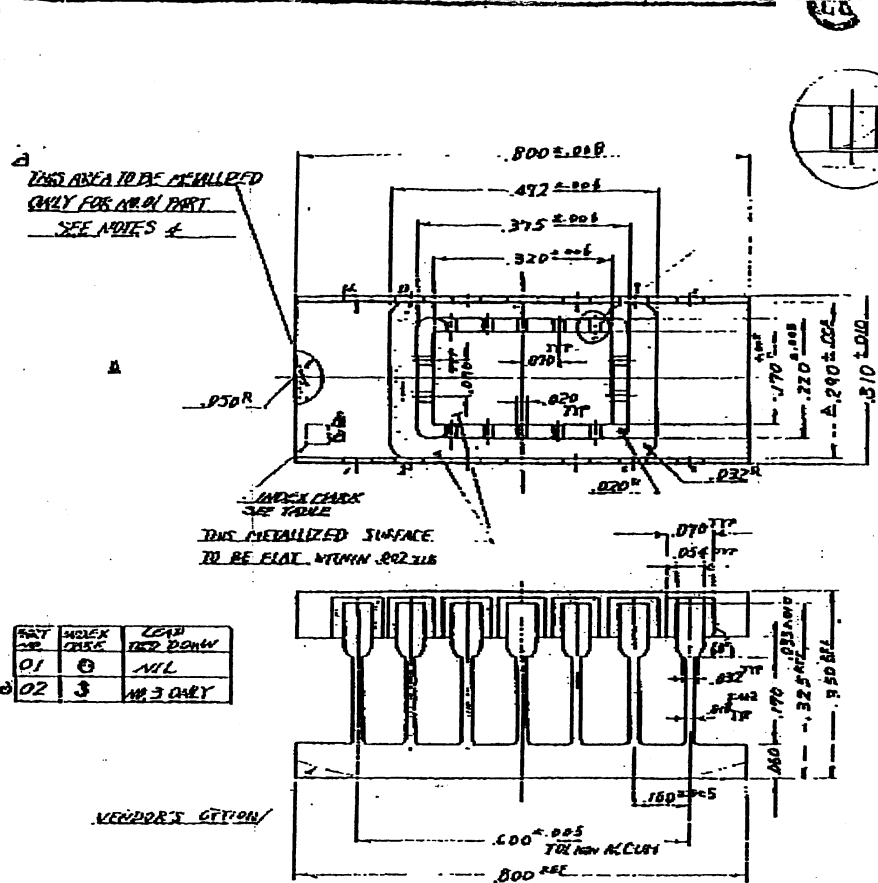


SSM P/N CSB01434



- NOTES 1. ALL EXPOSED METAL AND METALLIZED AREAS SHALL BE GOLD PLATED.
- 2. LEAD RESISTANCE 0.1Ω MAXIMUM
- 3. THIS METALLIZED AREA IS CONNECTED TO DIE ATTACH PAD

CHANGED: LEAD KOWAR — ALLOY 42	10/25/75	J. Smith
CHANGED: 288±.008 — 290±.008 REMOVED LEFT SIDE VIEW	SEP 5/75	J. Smith
ADDED: CERAMIC A473	SEP 5/75	J. Smith
ADDED: NOTE 3 RELOCATE INDEX DOT 45° CHAMFER TO OPTION	5/1/75	K. Smith
CHANGE	DATE	DRAWN

NAME	14 LEAD DIL <sup>™</sup> PACKAGE	TOLERANCES:	±10% ALL ±.005
SCALE	5/1	DRY	7/25/75
MATERIAL	AS INDICATED	CHECKED	8/25/75
KYOTO CERAMIC CO., LTD.		KYOTO JAPAN	
DRAWN		APPROVED	
DATE		DATE	
8/25/75		8/25/75	
KYOTO CERAMIC CO., LTD.		KYOTO JAPAN	
DRAWN		APPROVED	
DATE		DATE	
8/25/75		8/25/75	



www.spectrum-semi.com Phone: 408-435-5555 Fax: 408-435-8226